

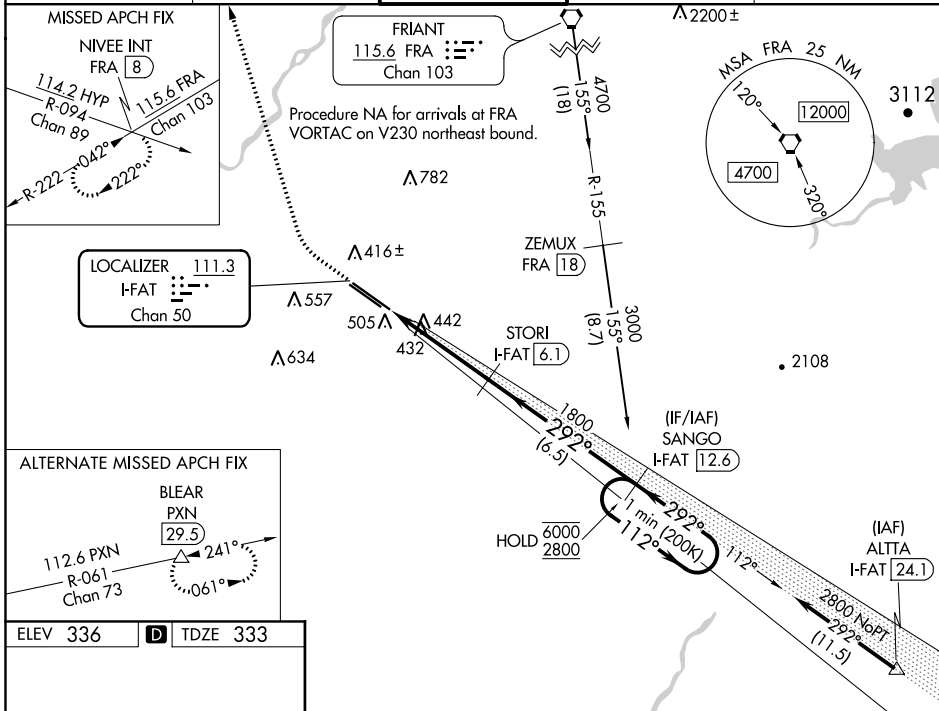
LOC/DME I-FAT 111.3 Chan 50	APP CRS 292°	Rwy Idg TDZE Apt Elev	9227 333 336
---	------------------------	-----------------------------	---

ILS Y RWY 29R (CAT II & III)

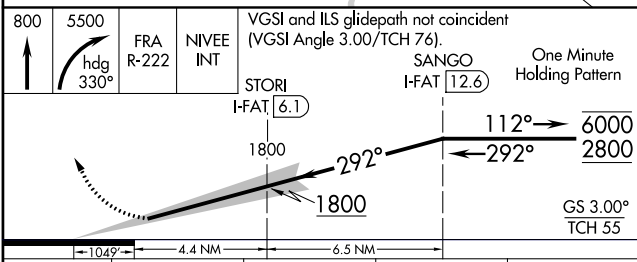
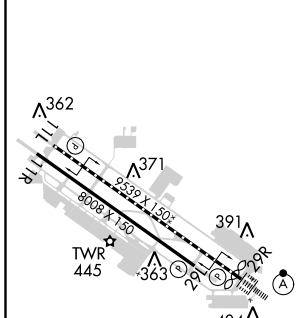
FRESNO YOSEMITE INTL (FAT)

DME required.	ALSF-2 	MISSED APPROACH: Climb to 800 then climbing right turn to 5500 on heading 330° and FRA VORTAC R-222 to NIVEE INT/FRA 8 DME and hold, continue climb-in-hold to 5500.
CAT II: RVR 1000 authorized with specific OPSPEC, MSPEC, or LOA approval and use of autoland or HUD to touchdown.		

ATIS 121.35 273.6	FRESNO APP CON 119.6 351.95	FRESNO TOWER 118.2 251.1	GND CON 121.7 348.6	CLNC DEL 124.35 348.6
-----------------------------	---------------------------------------	------------------------------------	-------------------------------	---------------------------------



ELEV 336	D	TDZE 333
----------	----------	----------



CATEGORY	A	B	C	D
S-ILS 29R	CAT II RA 101/12 100 DA 433			
S-ILS 29R	CAT III RVR 06			

CATEGORY II & III ILS - SPECIAL AIRCREW & AIRCRAFT CERTIFICATION REQUIRED

SW-2, 28 JAN 2021 to 25 FEB 2021

SW-2, 28 JAN 2021 to 25 FEB 2021