

FRESNO, CALIFORNIA

HI TACAN RWY 29R

VORTAC CZQ 112.9 Chan 76	APCH CRS 307°	Rwy Idg 29R 9227 29L 8008	29L TDZE 333 331
		Arprt Elev 336	

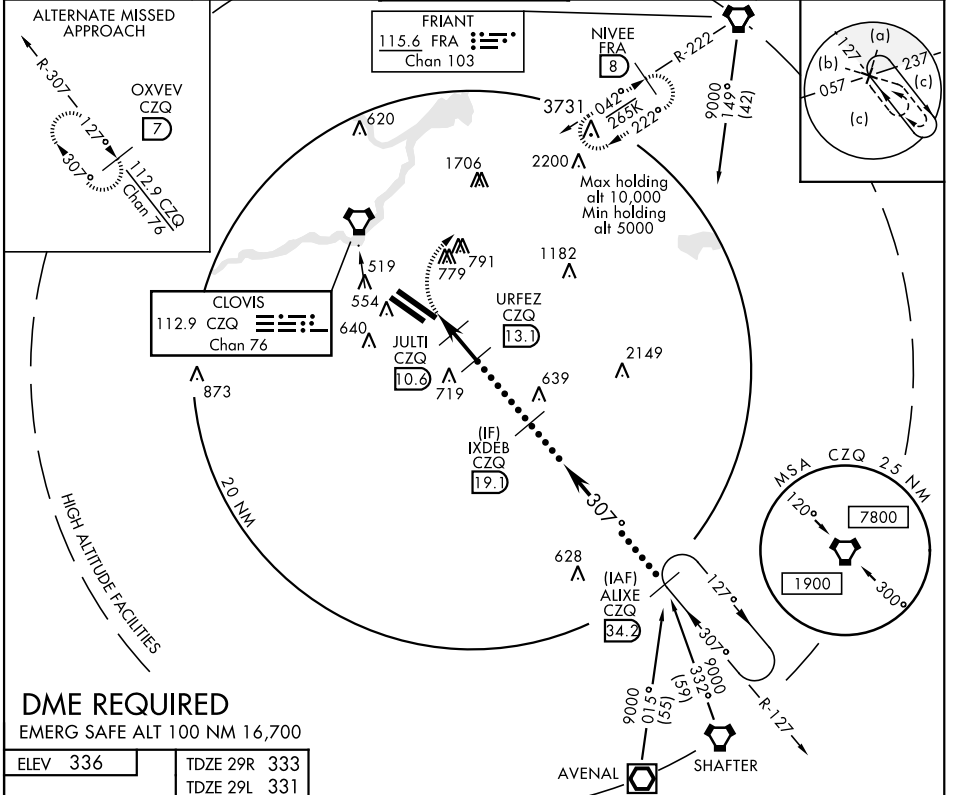
JAL-162 [USAF] FRESNO YOSEMITE INTL (KFAT)

ALSF-2

 MISSED APPROACH: Climb to 800 then climbing right turn to 5500 on heading 330° and FRA VORTAC R-222 to NIVEE INT/FRA 8 DME and hold, continue climb-in-hold to 5500.

* When ALS inop, increase CAT CDE vis to 1¼ miles.

ATIS 121.35 273.6	FRESNO APP CON 132.35 323.25	FRESNO TOWER 118.2 251.1	GND CON 121.7 348.6	CLNC DEL 124.35 348.6
-----------------------------	--	------------------------------------	-------------------------------	---------------------------------



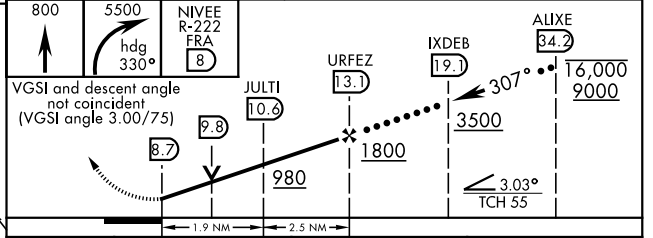
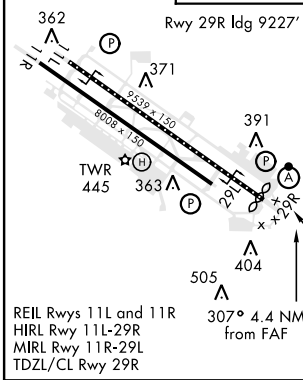
SW-2, 28 JAN 2021 to 25 FEB 2021

SW-2, 28 JAN 2021 to 25 FEB 2021

DME REQUIRED

EMERG SAFE ALT 100 NM 16,700

ELEV 336	TDZE 29R 333
	TDZE 29L 331



CATEGORY	C	D	E
S-29R *	760/40	427	(500-¾)
SIDESTEP 29L	760-1½ 429 (500-1½)	760-2	429 (500-2)
CIRCLING	920-1½	920-2	1140-2¾
	584 (600-1½)	584 (600-2)	804 (900-2¾)

FRESNO, CALIFORNIA

36°47'N-119°43'W

FRESNO YOSEMITE INTL (KFAT)

Amdt 3 10OCT19

HI TACAN RWY 29R