

WAAS CH 97337 W23A	APP CRS 234°	Rwy Idg TDZE Apt Elev	8000 126 130
--	------------------------	-----------------------------	---

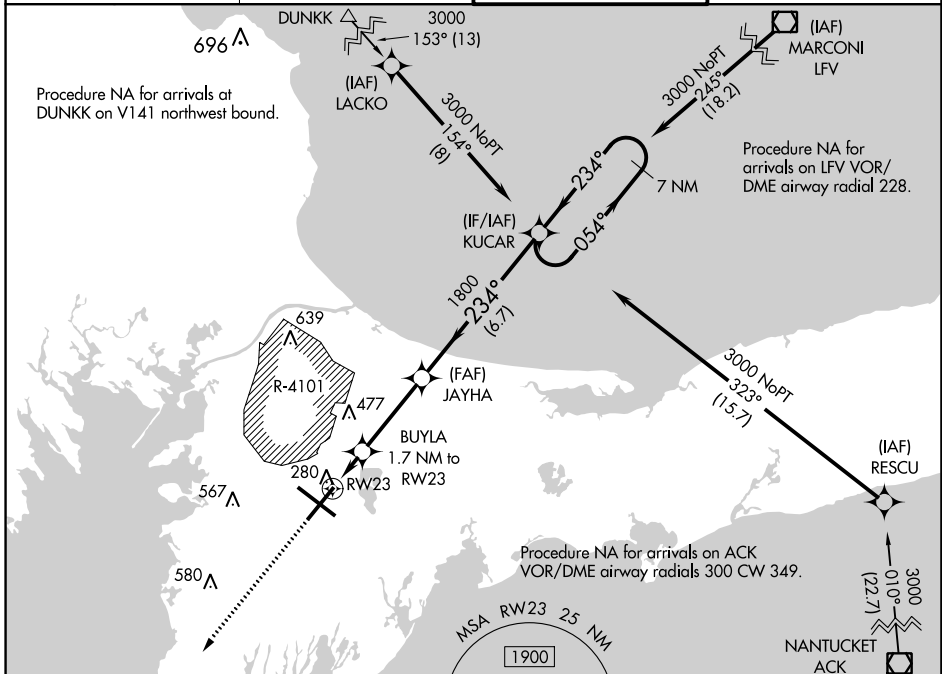
RNAV (GPS) RWY 23

CAPE COD COAST GUARD AIR STATION (F/MH)

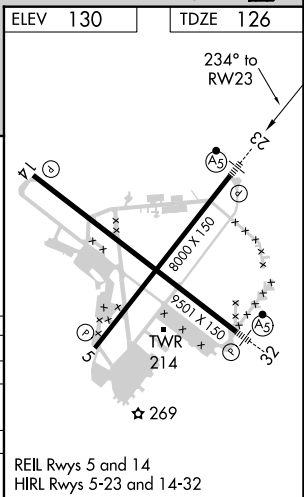
▲ For uncompensated Baro-VNAV systems, LNAV/VNAV NA below -15°C (5°F) or above 54°C (130°F).
 DME/DME RNP-0.3 NA. Circling NA NE of Rwy 14 and NW of Rwy 23. For inoperative MALSR, increase LNAV/VNAV all Cats visibility to RVR 4500 and LNAV Cats C and D visibility to RVR 6000.

MISSED APPROACH: Climb to 3000 direct GLESO and hold.

ATIS 120.475 236.825	BOSTON APP CON * 118.2 284.6	COAST GUARD TOWER 128.425 291.1	GND CON 124.15 275.8
--------------------------------	--	---	--------------------------------



ELEV 130	TDZE 126
3000	GLESO *LNAV only.
↑	☆
BUYLA 1.7 NM to RW23 JAYHA 1800 KUCAR 7 NM Holding Pattern GP 3.00° TCH 54	
RW23 1.1 NM to RW23 RW23 0.6 NM RW23 3.4 NM RW23 6.7 NM	
CATEGORY	A B C D
LPV DA	326/24 200 (200-½)
LNAV/VNAV DA	441/26 315 (400-½)
LNAV MDA	540/24 414 (500-½) 540/40 414 (500-¾)
CIRCLING	580-1 450 (500-1) 640-1 510 (600-1) 900-2¼ 770 (800-2¼) 900-2½ 770 (800-2½)



NE-1, 31 DEC 2020 to 28 JAN 2021

NE-1, 31 DEC 2020 to 28 JAN 2021