

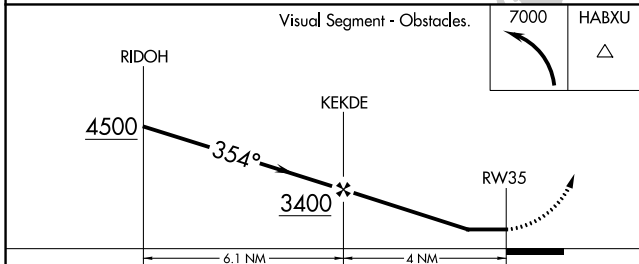
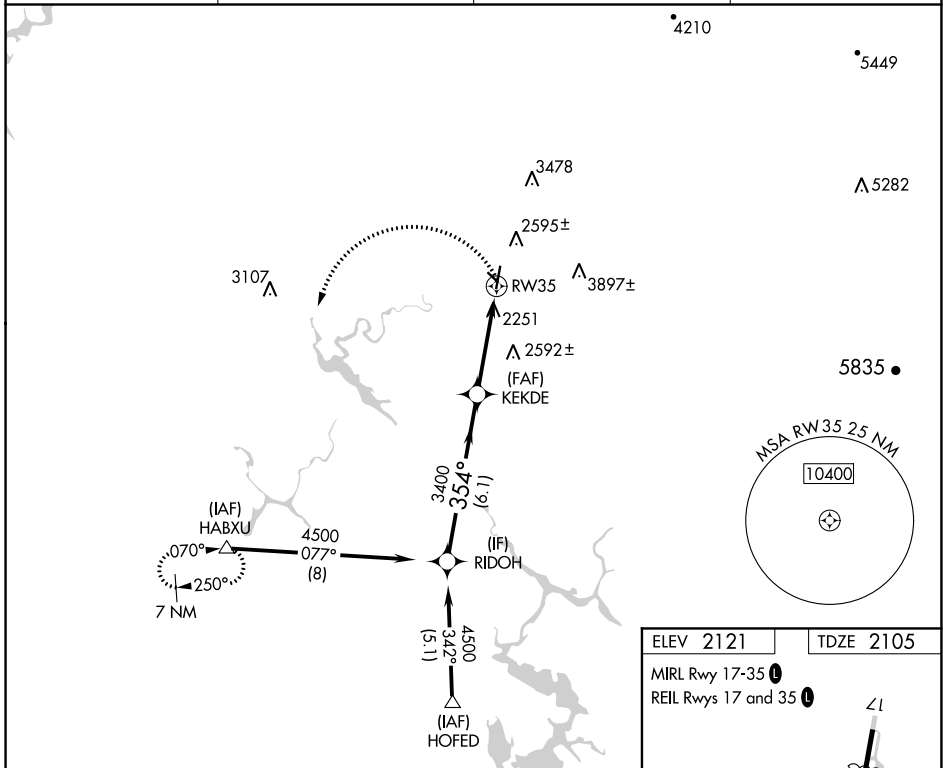
APP CRS	Rwy Idg	<b>4289</b>
<b>354°</b>	TDZE	<b>2105</b>
	Apt Elev	<b>2121</b>

# RNAV (GPS) RWY 35

COLUMBIA (O22)

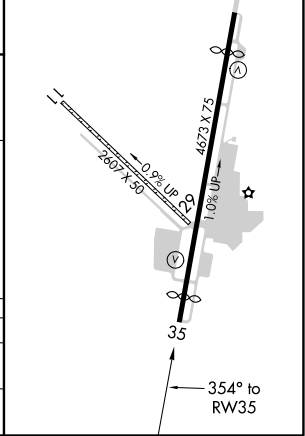
RNP APCH.	MISSED APPROACH: Climbing left turn to 7000 direct HABXU and hold, continue climb-in-hold to 7000.
<p>▼ Circling NA to Rwys 11 and 29. Circling NA east of Rwy 17-35. Procedure NA at night. Rwy 35 helicopter visibility reduction below 1 SM NA.</p>	

AWOS-3 <b>124.65</b>	NORCAL APP CON <b>125.1 363.2</b> (NORTH/WEST)	OAKLAND CENTER <b>121.25 327.0</b> (EAST/SOUTH)	UNICOM <b>122.975</b> (CTAF) <b>0</b>
-------------------------	---	--	--



ELEV 2121	TDZE 2105
-----------	-----------

MIRL Rwy 17-35 **0**  
REIL Rws 17 and 35 **0**



CATEGORY	A	B	C	D
LNVA MDA	3140-1¼ 1035 (1100-1¼)	3140-1½ 1035 (1100-1½)	3140-3 1035 (1100-3)	NA
<b>C</b> CIRCLING	3140-1¼ 1019 (1100-1¼)	3140-1½ 1019 (1100-1½)	3140-3 1019 (1100-3)	NA

SW-2, 31 DEC 2020 to 28 JAN 2021

SW-2, 31 DEC 2020 to 28 JAN 2021