

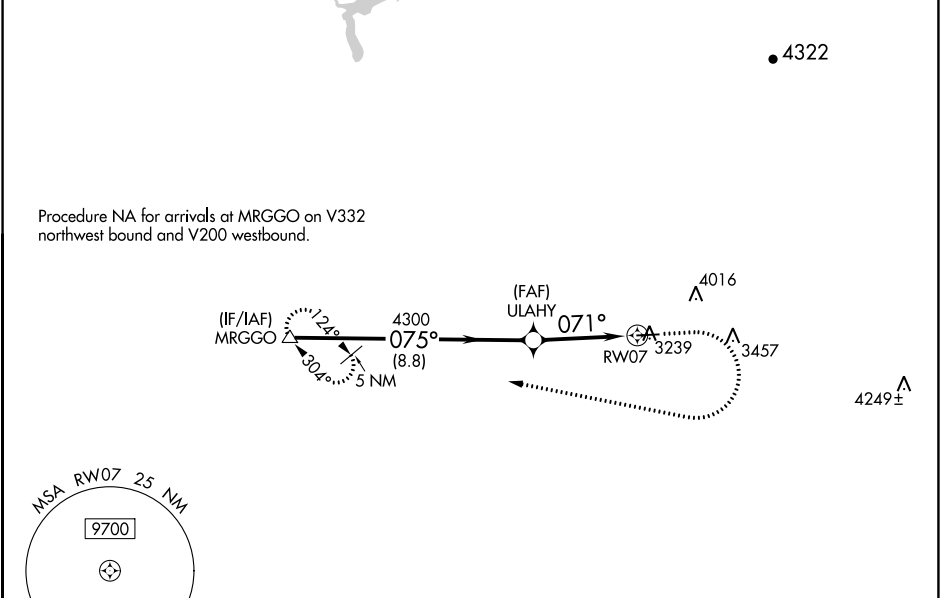
WAAS CH 90240 W07A	APP CRS 071°	Rwy Idg TDZE Apt Elev	4657 3131 3158
--	------------------------	-----------------------------	---

RNAV (GPS) RWY 7

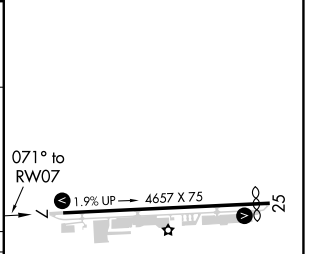
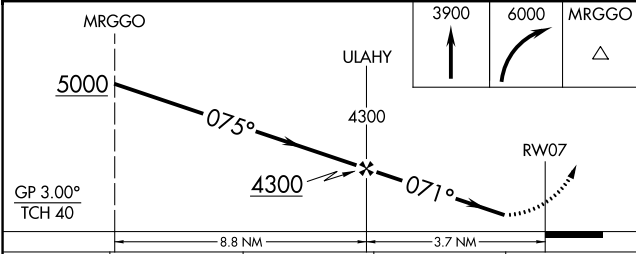
NEVADA COUNTY (GOO)

RNP APCH.	MISSED APPROACH: (Do not exceed 250K until MRGGO) Climb to 3900 then climbing right turn to 6000 direct MRGGO and hold.
<p>▼</p> <p>▲ Circling NA north of Rwy 7-25. Rwy 7 helicopter visibility reduction below 3/4 SM NA. For uncompensated Baro-VNAV systems, LNAV/VNAV NA below -21°C or above 54°C.</p>	

AWOS-3 121.325	NORCAL APP CON 125.4 259.1	UNICOM 122.725 (CTAF) 0
--------------------------	--------------------------------------	-----------------------------------



ELEV 3158	TDZE 3131
-----------	-----------



CATEGORY	A	B	C	D
LPV DA		3606-1 3/8	475 (500-1 3/8)	
LNAV/VNAV DA		3772-1 7/8	641 (700-1 7/8)	
LNAV MDA	3860-1	729 (800-1)	3860-2	729 (800-2)
CIRCLING	3860-1	702 (800-1)	3880-2 722 (800-2)	3880-2 1/4 722 (800-2 1/4)

REIL Rws 7 and 25

MIRL Rwy 7-25 0

SW-2, 31 DEC 2020 to 28 JAN 2021

SW-2, 31 DEC 2020 to 28 JAN 2021