

(STRYA7.STRYA) 19115

AL-6453 (FAA)

TEXAS GULF COAST RGNL (L.BX)
ANGLETON/LAKE JACKSON, TEXAS

STRYA SEVEN DEPARTURE (RNAV)

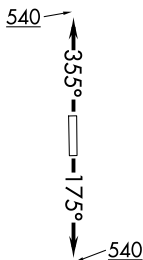
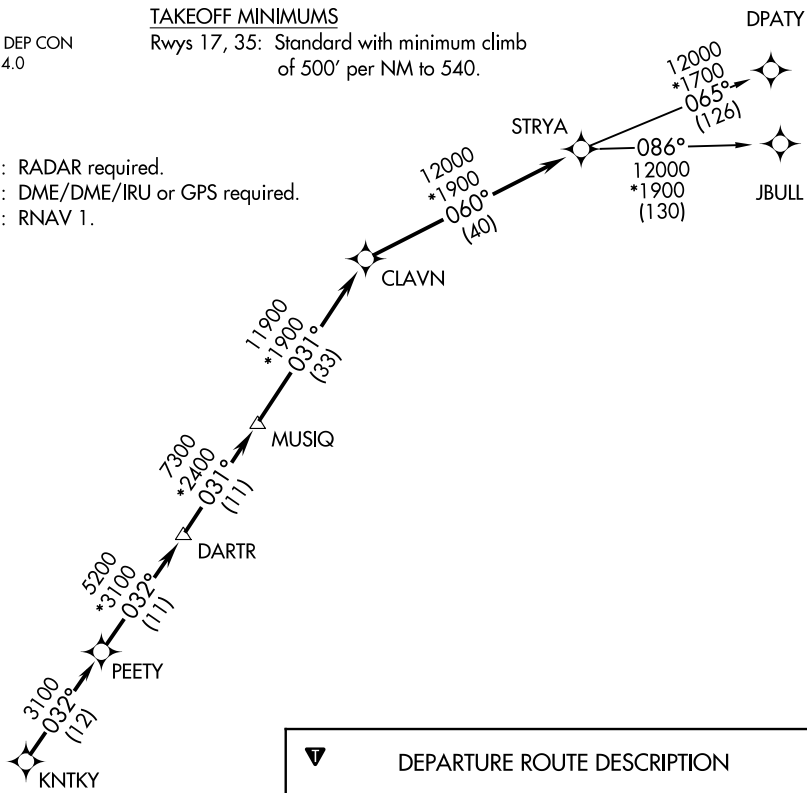
TOP ALTITUDE: ASSIGNED BY ATC

ASOS
119.925
CTAF
123.0
CLNC DEL
125.2
HOUSTON DEP CON
134.45 284.0

TAKEOFF MINIMUMS

Rwys 17, 35: Standard with minimum climb
of 500' per NM to 540.

NOTE: RADAR required.
NOTE: DME/DME/IRU or GPS required.
NOTE: RNAV 1.



NOTE: Chart not to scale.



DEPARTURE ROUTE DESCRIPTION

TAKEOFF RWY 17: Climb heading 175° to 540 for
RADAR vectors to KNTKY, thence

TAKEOFF RWY 35: Climb heading 355° to 540 for
RADAR vectors to KNTKY, thence

. . . . on track 032° to PEETY, then on track 032° to
DARTR, then on track 031° to MUSIQ, then on track
031° to CLAVN, then on track 060° to STRYA, then
on (transition). Maintain ATC assigned altitude.
Expect filed altitude 10 minutes after departure.

DPATY TRANSITION (STRYA7.DPATY)

JBULL TRANSITION (STRYA7.JBULL)

STRYA SEVEN DEPARTURE (RNAV)

(STRYA7.STRYA) 25APR19

ANGLETON/LAKE JACKSON, TEXAS
TEXAS GULF COAST RGNL (L.BX)

SC-5, 31 DEC 2020 to 28 JAN 2021

SC-5, 31 DEC 2020 to 28 JAN 2021