

APP CRS	Rwy Idg	2994
057°	TDZE	87
	Apt Elev	87

RNAV (GPS) RWY 6

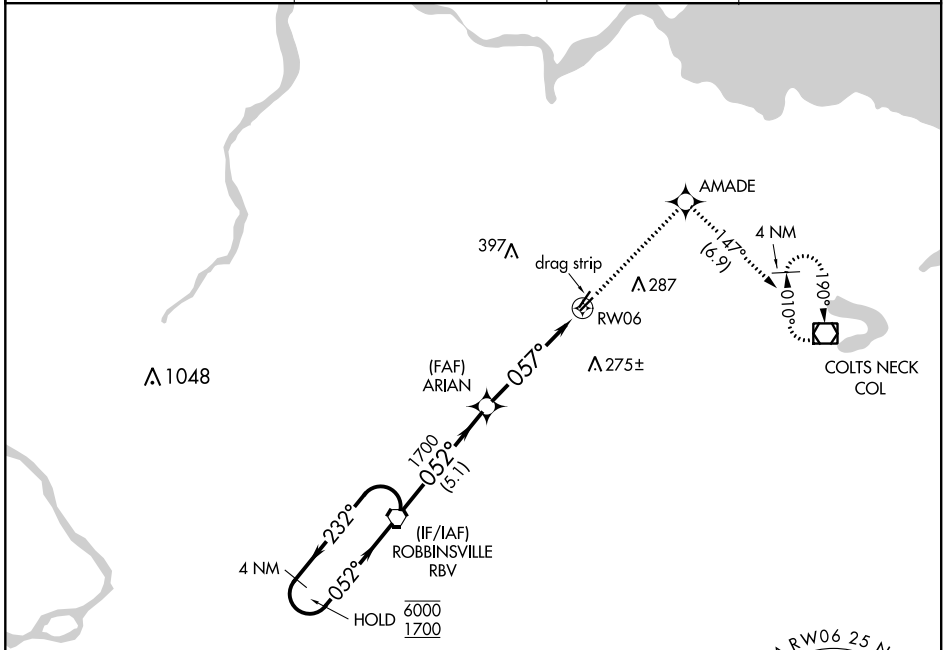
OLD BRIDGE (3N6)

RNP APCH.

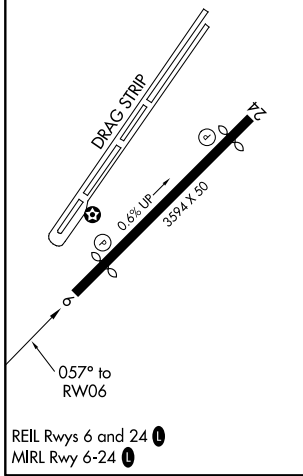
▼ Procedure NA at night. Rwy 6 helicopter visibility reduction below 1 SM NA.
▲ NA Use Belmar/Farmingdale altimeter setting; when not received, use Wrightstown altimeter setting and increase all MDA 20 feet.

MISSED APPROACH: Climb to 2000 direct AMADE and on track 147° to COL VOR/DME and hold.

BLM AWOS-3PT 121.625	MC GUIRE APP CON 126.475 363.8	GCO 121.725	UNICOM 123.075 (CTAF) ①
--------------------------------	--	-----------------------	--



ELEV 87	TDZE 87
----------------	----------------



REIL Rwy 6 and 24 **①**
 MIRL Rwy 6-24 **①**

NoPT for arrival on RBV VORTAC airway radials 238 CW 289.

MSA RW06 2.5 NM
 2900

Visual Segment - Obstacles.			
2000	AMADE	tr 147°	COL
4 NM Holding Pattern	RBV VORTAC	ARIAN	RW06
6000 ← 232°	1700 → 052°	1700	057°
5.1 NM		4.9 NM	
CATEGORY	A	B	C D
LNAV MDA	660-1 573 (600-1)		NA

NE-2, 31 DEC 2020 to 28 JAN 2021

NE-2, 31 DEC 2020 to 28 JAN 2021