

WAAS CH <b>42810</b> <b>W05A</b>	APP CRS <b>045°</b>	Rwy Idg TDZE Apt Elev	<b>5000</b> <b>35</b> <b>37</b>
--	------------------------	-----------------------------	---------------------------------------

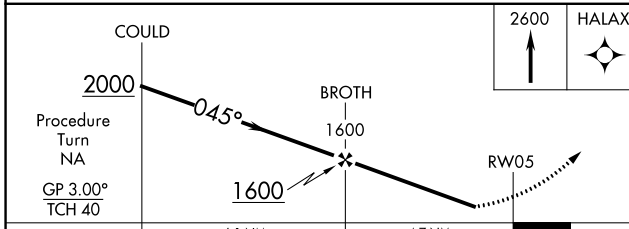
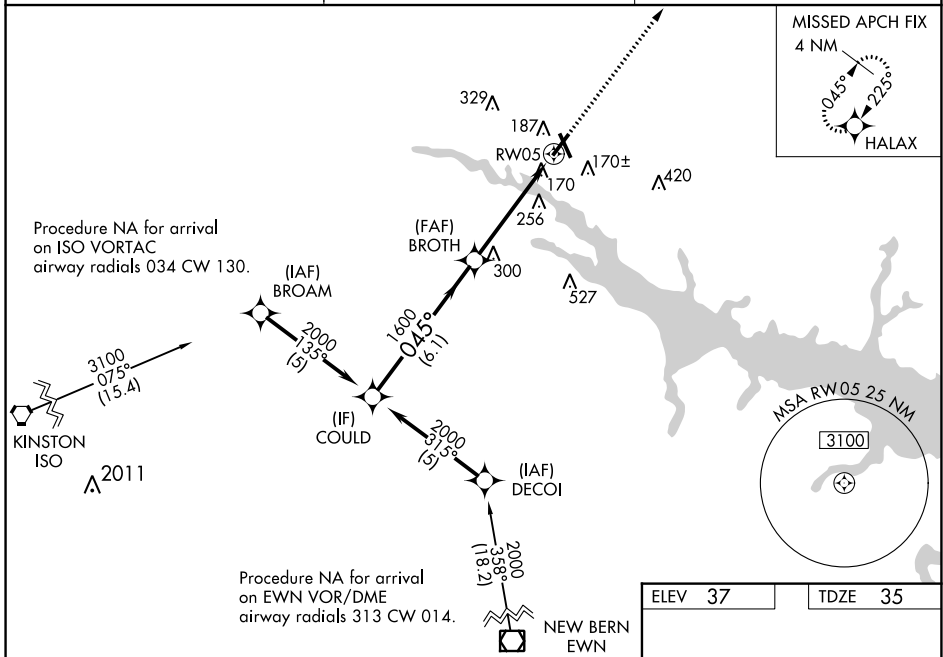
# RNAV (GPS) RWY 5

WASHINGTON-WARREN (OCW)

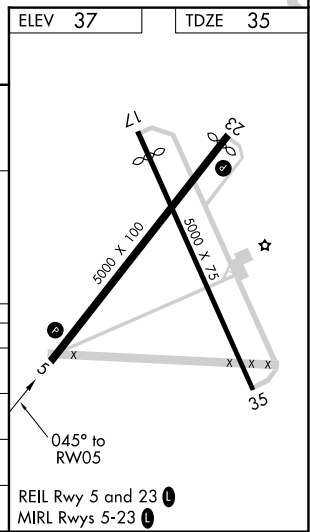
**▼** **▲** Night Landing: Rwy 17 NA. Baro-VNAV NA when using Greenville altimeter setting. For uncompensated Baro-VNAV systems, LNAV/VNAV NA below -1.5°C (5°F) or above 48°C (118°F). DME/DME RNP-0.3 NA. Helicopter visibility reduction below ¾ SM NA. When local altimeter setting not received, use Greenville altimeter setting and increase LPV DA to 483, LNAV/VNAV DA to 518, and all MDA 60 feet; increase LNAV/VNAV all Cats. visibility ¼ mile.

**MISSED APPROACH:**  
Climb to 2600 direct  
HALAX and hold.

<b>AWOS-3</b> <b>120.175</b>	<b>CHERRY POINT APP CON</b> <b>119.35 377.175</b>	<b>UNICOM</b> <b>122.7 (CTAF)</b> <b>📶</b>
---------------------------------	--	---



CATEGORY	A	B	C	D
LPV DA		442-1½	407 (500-1½)	
LNAV/VNAV DA		477-1½	442 (500-1½)	
LNAV MDA	560-1	525 (600-1)	560-1½ 525 (600-1½)	560-1¾ 525 (600-1¾)
CIRCLING	560-1	523 (600-1)	560-1½ 523 (600-1½)	620-2 583 (600-2)



SE-2, 31 DEC 2020 to 28 JAN 2021

SE-2, 31 DEC 2020 to 28 JAN 2021