

WAAS CH <b>78310</b> <b>W35A</b>	APP CRS <b>343°</b>	Rwy Idg TDZE Apt Elev	<b>5000</b> <b>35</b> <b>37</b>
--	------------------------	-----------------------------	---------------------------------------

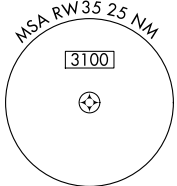
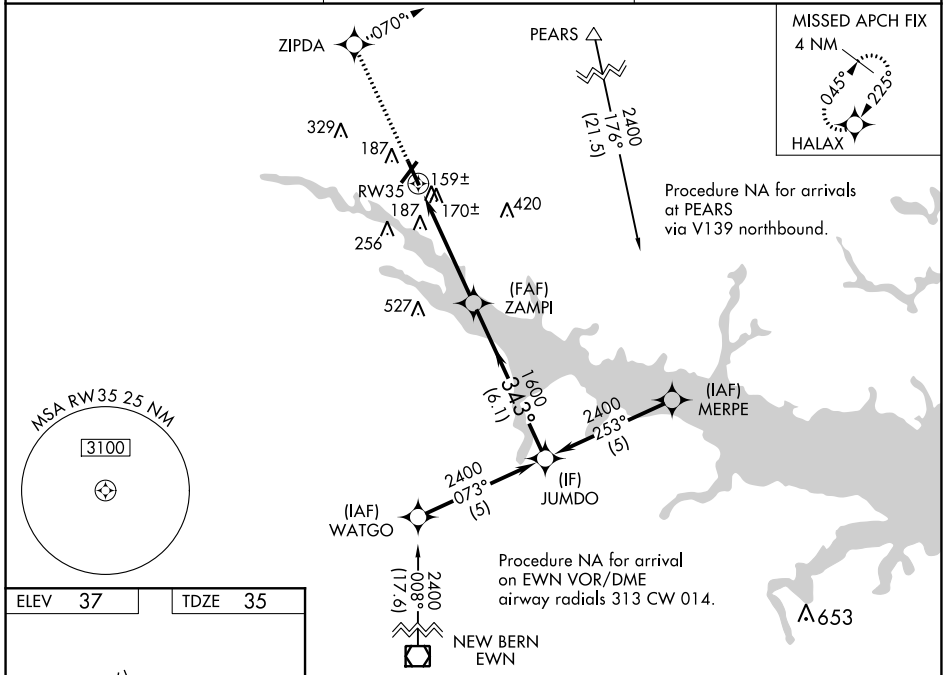
# RNAV (GPS) RWY 35

WASHINGTON-WARREN (OCW)

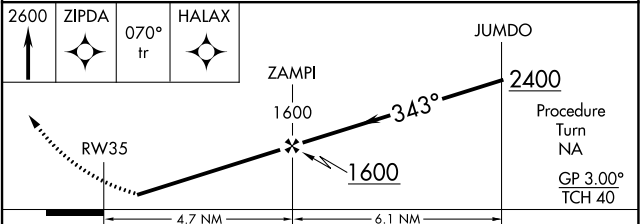
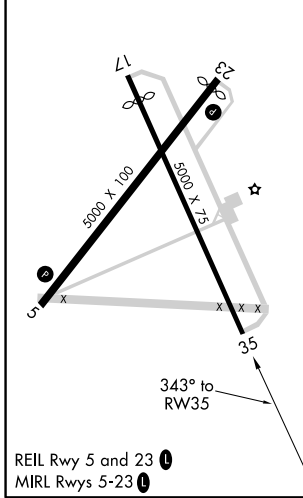
Baro-VNAV NA when using Greenville altimeter setting. For uncompensated Baro-VNAV systems, LNAV/VNAV NA below -15°C (5°F) or above 48°C (118°F). DME/DME RNP-0.3 NA. Helicopter visibility reduction below ¼ SM NA. When local altimeter setting not received, use Greenville altimeter setting and increase LPV DA to 400, LNAV/VNAV DA to 534, and all MDA 60 feet; increase LNAV Cats C and D visibility ¼ mile. Night Landing: Rwy 17 NA.

MISSED APPROACH: Climb to 2600 direct ZIPDA and via 070° track to HALAX and hold.

AWOS-3 <b>120.175</b>	CHERRY POINT APP CON <b>119.35 377.175</b>	UNICOM <b>122.7 (CTAF) 0</b>
--------------------------	---	---------------------------------



ELEV 37	TDZE 35
---------	---------



CATEGORY	A	B	C	D
LPV DA	359-1¼		324 (400-1¼)	
LNAV/VNAV DA	493-1¾		458 (500-1¾)	
LNAV MDA	500-1	465 (500-1)	500-1¼	500-1½
			465 (500-1¼)	465 (500-1½)
CIRCLING	540-1	503 (600-1)	540-1½	620-2
			503 (600-1½)	583 (600-2)

SE-2, 31 DEC 2020 to 28 JAN 2021

SE-2, 31 DEC 2020 to 28 JAN 2021