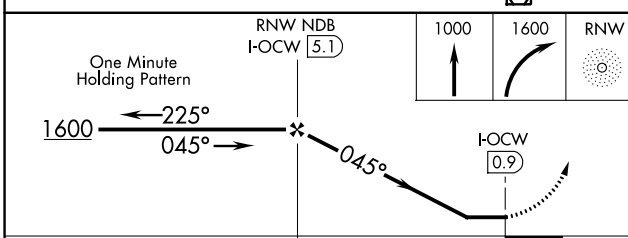
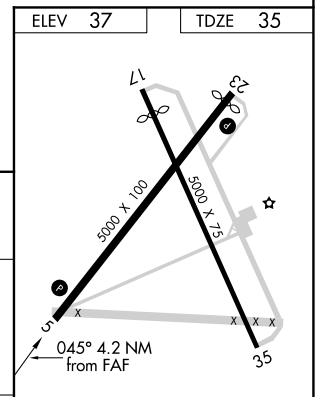
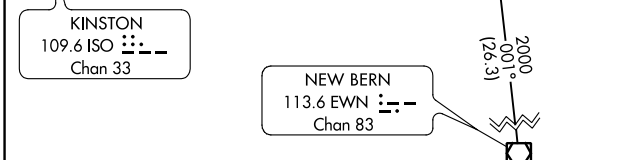
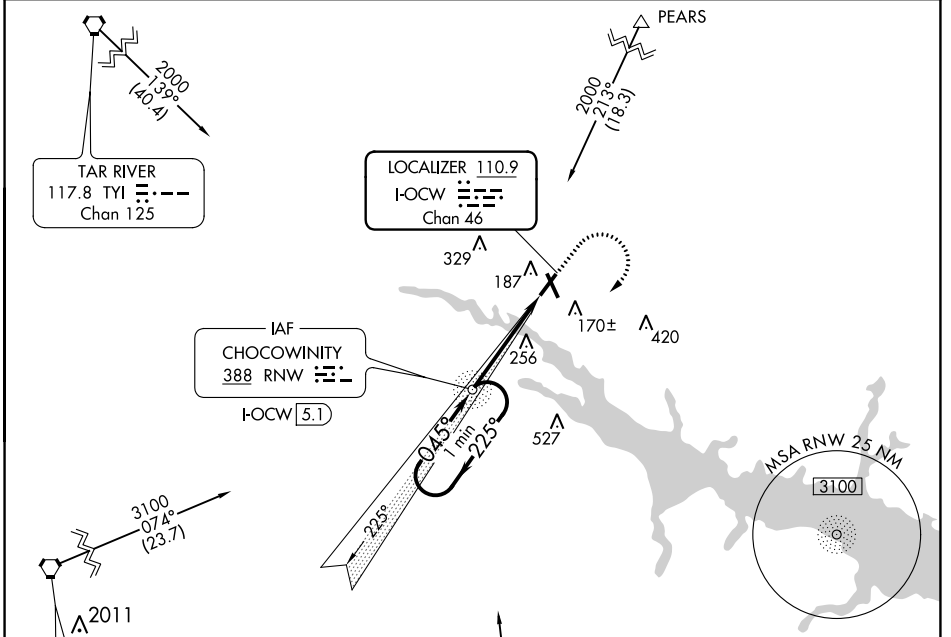


LOC/DME I-OCW 110.9 Chan 46	APP CRS 045°	Rwy Idg TDZE Apt Elev	5000 35 37
---	------------------------	-----------------------------	---------------------------------------

LOC RWY 5
WASHINGTON-WARREN (OCW)

ADF Required. Night Landing: Rwy 17 NA.
Helicopter visibility reduction below 3/4 SM NA.
MISSED APPROACH: Climb to 1000, then climbing right turn to 1600 direct RNW NDB and hold.

AWOS-3 120.175	CHERRY POINT APP CON 119.35 377.175	UNICOM 122.7 (CTAF)
---------------------------------	--	--------------------------------------



CATEGORY	A	B	C	D	REIL Rwy 5 and 23 (1) MIRL Rwys 5-23 (1)
S-5	480-1	445 (500-1)	480-1 3/8	445 (500-1 3/8)	FAF to MAP 4.2 NM
CIRCLING	540-1	503 (600-1)	540-1 1/2	620-2	Knots: 60 90 120 150 180 Min:Sec: 4:12 2:48 2:06 1:41 1:24

SE-2, 31 DEC 2020 to 28 JAN 2021

SE-2, 31 DEC 2020 to 28 JAN 2021