

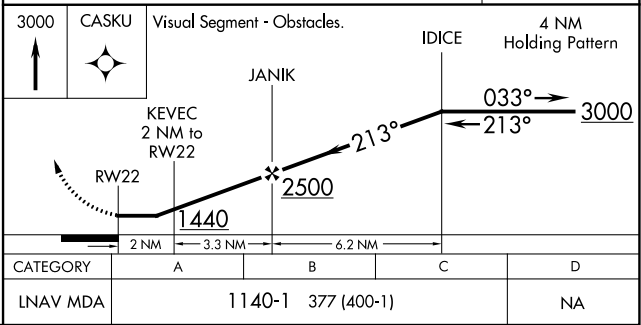
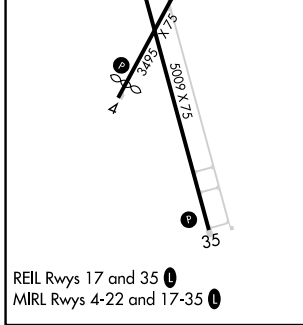
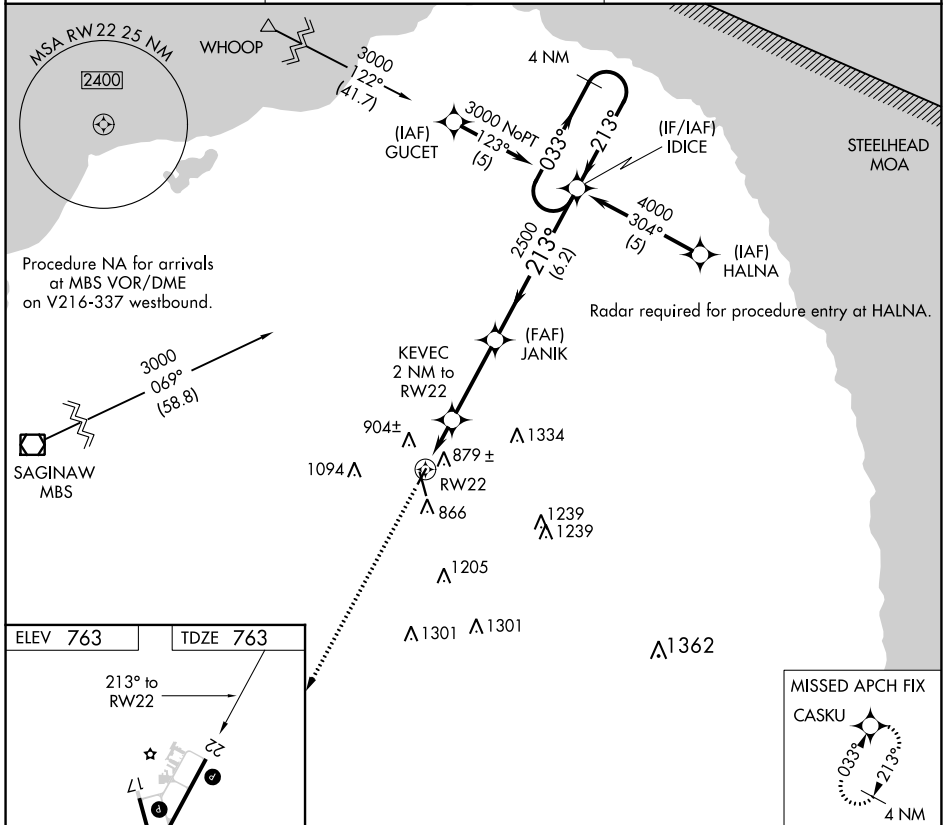
APP CRS 213°	Rwy Idg 3495
	TDZE 763
	Apt Elev 763

RNAV (GPS) RWY 22

HURON COUNTY MEMORIAL (BAX)

RNP APCH.	MISSED APPROACH: Climb to 3000 direct CASKU and hold.
<p>▼ When local altimeter setting not received, use MBS Intl altimeter setting and increase all MDA 140 feet; increase LNAV Cat C visibility ½ SM. Procedure NA at night. Rwy 22 helicopter visibility reduction below 1 SM NA.</p>	

AWOS-3 118.6	CLEVELAND CENTER 126.75 348.75	UNICOM 123.075 (CTAF) 0
------------------------	--	-----------------------------------



EC-1, 31 DEC 2020 to 28 JAN 2021

EC-1, 31 DEC 2020 to 28 JAN 2021