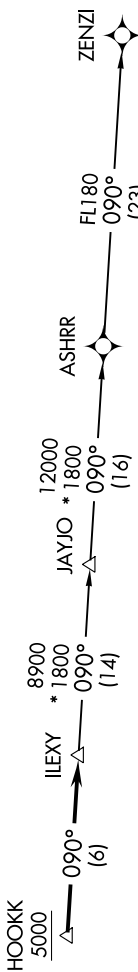
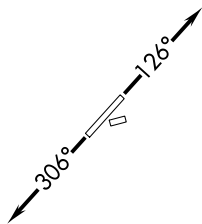


# ILEXY TWO DEPARTURE (RNAV)

SC-3, 31 DEC 2020 to 28 JAN 2021

**TOP ALTITUDE:  
ASSIGNED BY ATC**

AWOS-3  
118.825  
CLINC DEL  
EXECUTIVE TOWER\*  
120.3 (CTAF)  
AUSTIN DEP CON  
127.225 317.65  
126.025 when tower closed



- NOTE: RADAR required.
- NOTE: DME/DME/IRU or GPS required.
- NOTE: RNAV-1.
- NOTE: Houston terminal area arrivals expect routing from ILEXY.
- NOTE: JAYJO transition to join V306 only.

**TAKEOFF MINIMUMS:**  
Rwys 16, 34: NA-Environmental.  
Rwys 13, 31: Standard.



NOTE: Chart not to scale.

## DEPARTURE ROUTE DESCRIPTION

**TAKEOFF RWY 13:** Climb heading 126° or as assigned by ATC for RADAR vectors to cross HOOKK at or above 5000, thence. . . .

**TAKEOFF RWY 31:** Climb heading 306° or as assigned by ATC for RADAR vectors to cross HOOKK at or above 5000, thence. . . .

. . . on track 090° to ILEXY, then on transition. Maintain altitude assigned by ATC. Expect filed altitude 10 minutes after departure.

JAYJO TRANSITION (ILEXY2..JAYJO)  
ZENZI TRANSITION (ILEXY2.ZENZI)

# ILEXY TWO DEPARTURE (RNAV)

SC-3, 31 DEC 2020 to 28 JAN 2021