

APP CRS	Rwy Idg	<b>4440</b>
<b>326°</b>	TDZE	<b>721</b>
	Apt Elev	<b>742</b>

# RNAV (GPS) RWY 33

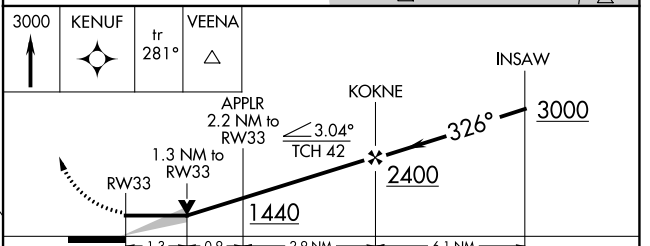
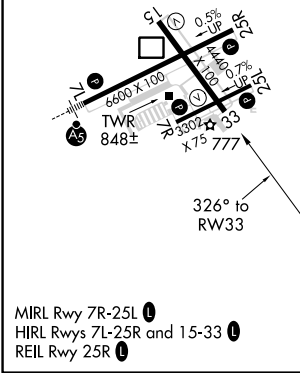
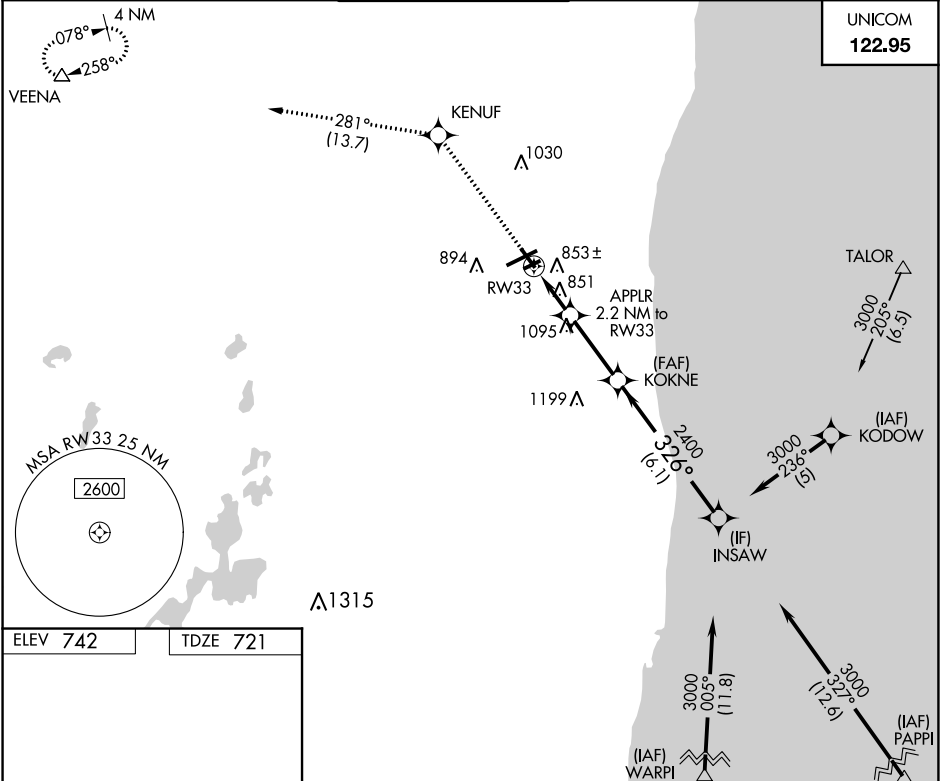
KENOSHA RGNL (E.N.W)

RNP APCH.  
 Cirdling Rwy 7R, 15 NA at night.

MISSED APPROACH: Climb to 3000 direct KENUF and on track 281° to VEENA and hold.

ATIS <b>127.175</b>	MILWAUKEE APP CON <b>135.875 317.725</b>	<b>KENOSHA TOWER ★</b> <b>118.6 (CTAF) 0 353.6</b>	GND CON <b>121.875</b>	CLNC DEL <b>121.875</b>	CLNC DEL <b>118.6</b> <small>(When twr closed)</small>
------------------------	---	---	---------------------------	----------------------------	--

UNICOM  
**122.95**



CATEGORY	A	B	C	D
LNAV MDA	1180-1	459 (500-1)	1180-1 $\frac{3}{8}$ 459 (500-1 $\frac{3}{8}$ )	1180-1 $\frac{1}{2}$ 459 (500-1 $\frac{1}{2}$ )
CIRCLING	1200-1	458 (500-1)	1200-1 $\frac{1}{2}$ 458 (500-1 $\frac{1}{2}$ )	1340-2 598 (600-2)

EC-3, 31 DEC 2020 to 28 JAN 2021

EC-3, 31 DEC 2020 to 28 JAN 2021