

LOC I-ENW <b>109.35</b>	APP CRS <b>066°</b>	Rwy ldg TDZE Apt Elev	<b>6600</b> <b>742</b> <b>742</b>
----------------------------	------------------------	-----------------------------	---

# ILS or LOC RWY 7L

KENOSHA RGNL (ENW)

ADF required.

Circling Rwy 7R, 15 NA at night.

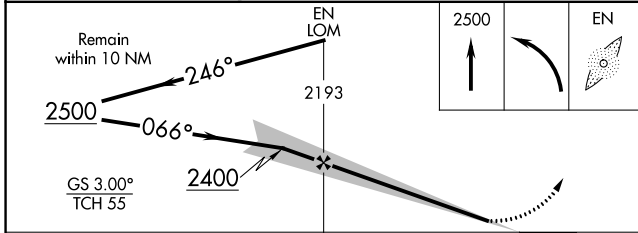
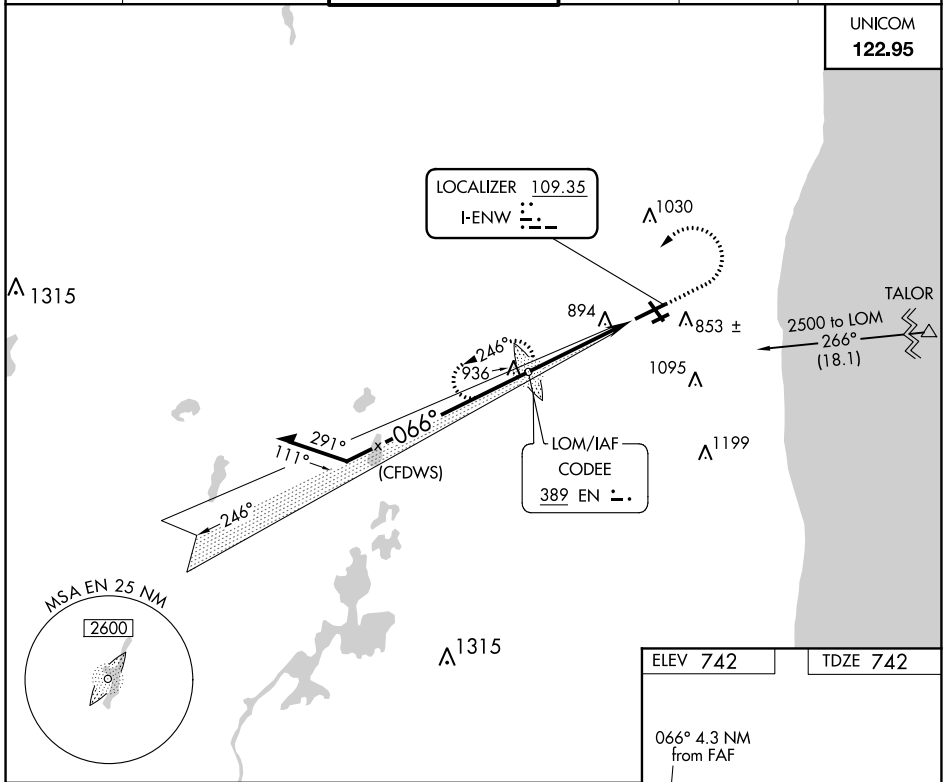
MALSRL



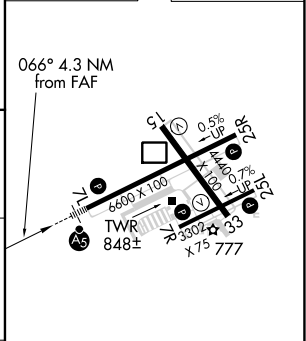
MISSED APPROACH: Climb to 2500 then left turn direct EN LOM and hold.

ATIS <b>127.175</b>	MILWAUKEE APP CON <b>135.875 317.725</b>	KENOSHA TOWER * <b>118.6 (CTAF) 0 353.6</b>	GND CON <b>121.875</b>	CLNC DEL <b>121.875</b>	CLNC DEL <b>118.6</b> (When twr closed)
------------------------	---	--	---------------------------	----------------------------	---

UNICOM  
**122.95**



ELEV 742	TDZE 742
----------	----------



CATEGORY	A	B	C	D
S-ILS 7L	942-1/2 200 (200-1/2)			
S-LOC 7L	1200-1/2	458 (500-1/2)	1200-7/8 485 (500-7/8)	1200-1 458 (500-1)
CIRCLING	1200-1	458 (500-1)	1200-1 1/2 458 (500-1 1/2)	1340-2 598 (600-2)

MIRL Rwy 7R-25L

HIRL Rwy 7L-25R and 15-33

REIL Rwy 25R

FAF to MAP 4.3 NM

Knots	60	90	120	150	180
Min:Sec	4:18	2:52	2:09	1:43	1:26

EC-3, 31 DEC 2020 to 28 JAN 2021

EC-3, 31 DEC 2020 to 28 JAN 2021