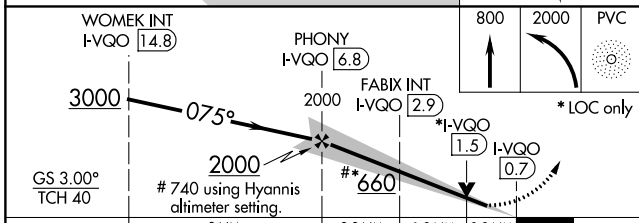
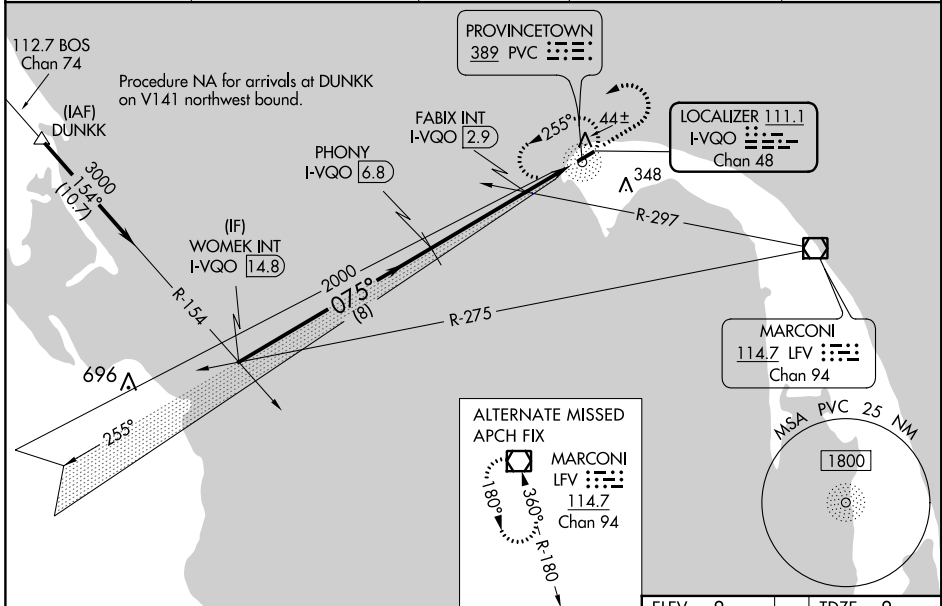


LOC/DME I-VQO <b>111.1</b> Chan <b>48</b>	APP CRS <b>075°</b>	Rwy Idg <b>3502</b> TDZE <b>8</b> Apt Elev <b>8</b>
---	------------------------	---

# ILS or LOC RWY 7

PROVINCETOWN MUNI (PVC)

DME required for LOC only, ADF.		MALSF	MISSED APPROACH: Climb to 800 then climbing left turn to 2000 direct PVC NDB and hold, continue climb-in-hold to 2000.
AWOS-3PT <b>119.275</b>	BOSTON APP CON ★ <b>118.2</b>	CLNC DEL <b>120.65</b>	UNICOM <b>122.8</b> (CTAF) <b>122.85</b> 0



CATEGORY	A	B	C	D
S-ILS 7	208-¾	200 (200-¾)		NA
S-LOC 7	660-¾	652 (700-¾)		NA
CIRCLING	660-1	652 (700-1)		NA
FABIX FIX MINIMUMS (DUAL VOR RECEIVERS OR DME REQUIRED)				
S-LOC 7	320-¾	312 (400-¾)		NA
CIRCLING	460-1	660-1		NA
	452 (500-1)	652 (700-1)		

ELEV 8	TDZE 8
FAF to MAP 6.1 NM	
Knots	60 90 120 150 180
Min:Sec	6:06 4:04 3:03 2:26 2:02

NE-1, 31 DEC 2020 to 28 JAN 2021

NE-1, 31 DEC 2020 to 28 JAN 2021