

WAAS CH <b>99336</b> <b>W05A</b>	APP CRS <b>029°</b>	Rwy Idg TDZE Apt Elev	<b>5047</b> <b>746</b> <b>775</b>
--	------------------------	-----------------------------	---

# RNAV (GPS) RWY 5

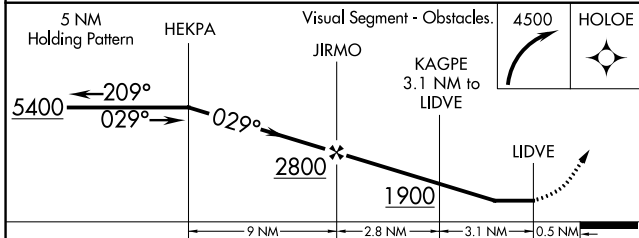
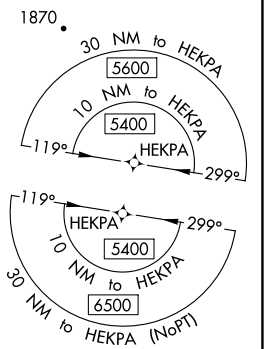
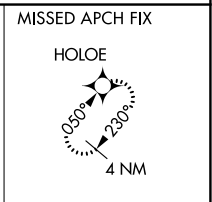
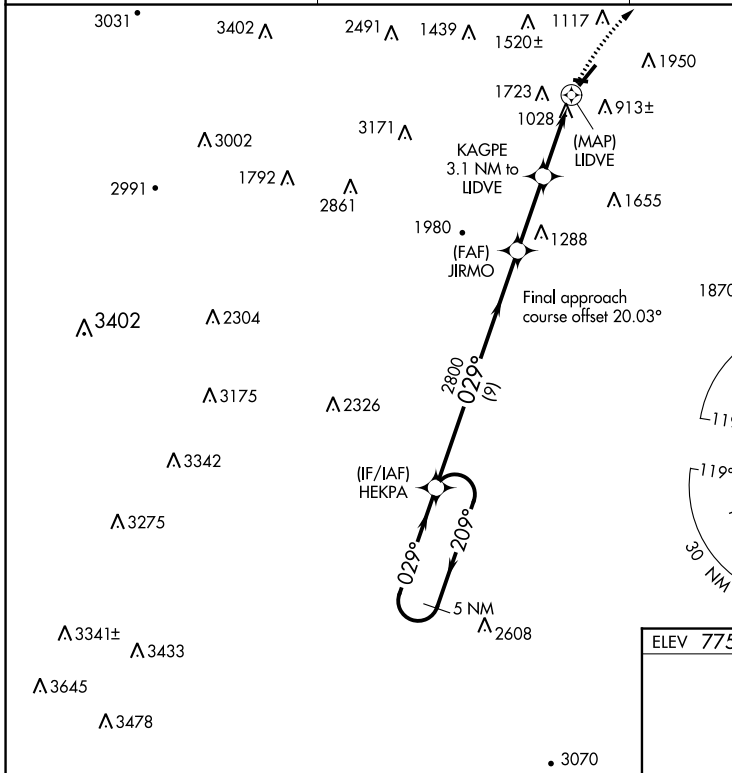
GREATER CUMBERLAND RGNL (CBE)

RNP APCH.

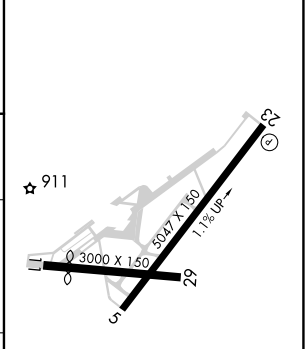
**⚠** Circling NA NW of Rwy 5-23. When local altimeter setting not received, use Winchester altimeter setting and increase all MDA 100 feet and increase LP visibility Cat B ¼ mile, Cats C and D ½ mile. Rwy 5 helicopter visibility reduction below 1 SM NA. Procedure NA at night.

**MISSED APPROACH:** Climbing right turn to 4500 direct HOLOE and hold, continue climb-in-hold to 4500.

AWOS-3 <b>128.625</b>	JOHNSTOWN APP CON ★ <b>121.2 299.2</b>	UNICOM <b>122.8 (CTAF) 0</b>
--------------------------	---	---------------------------------



ELEV 775	TDZE 746
----------	----------



CATEGORY	A	B	C	D
LP MDA	1440-1	694 (700-1)	1440-2	694 (700-2)
LNAV MDA	1840-1¼ 1094 (1100-1¼)	1840-1½ 1094 (1100-1½)	1840-3	1094 (1100-3)
<b>C</b> CIRCLING	1840-1¼ 1065 (1100-1¼)	2140-1½ 1365 (1400-1½)	2260-3 1485 (1500-3)	2360-3 1585 (1600-3)

- REIL Rwy 23 0
- LRL Rwy 11-29 0
- HIRL Rwy 5-23 0

NE-3, 31 DEC 2020 to 28 JAN 2021

NE-3, 31 DEC 2020 to 28 JAN 2021