

WAAS CH 49011 W09A	APP CRS 091°	Rwy Idg TDZE Apt Elev	7000 695 703
--	------------------------	-----------------------------	---

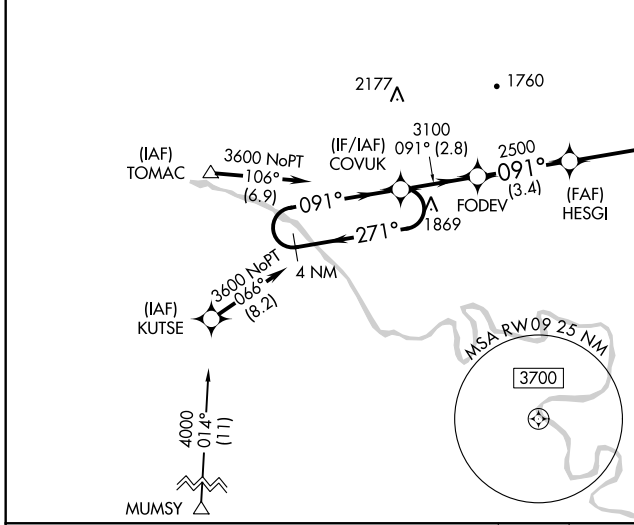
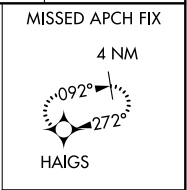
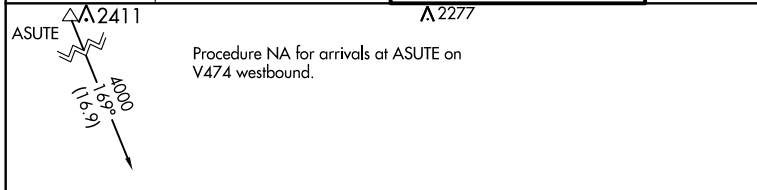
RNAV (GPS) RWY 9

HAGERSTOWN RGNL-RICHARD A HENSON FIELD (HGR)

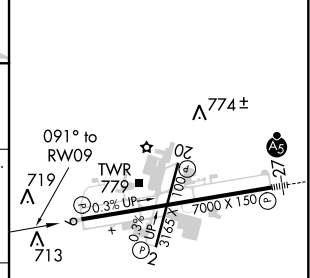
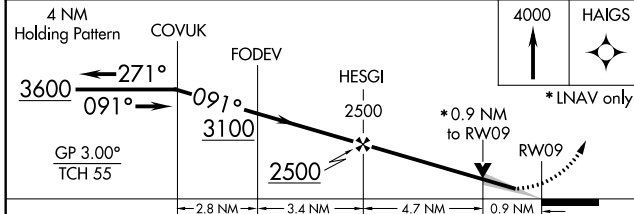
⚠ Rwy 20 helicopter visibility reduction below 1 SM NA. Circling Rwy 20 NA at night. For uncompensated Baro-VNAV systems, LNAV/VNAV NA below -14°C (7°F) or above 54°C (130°F). DME/DME RNP-0.3 NA. When local altimeter setting not received, use Martinsburg altimeter setting and increase all DA 70 feet and all MDA 80 feet; increase LPV all Cats visibility 1/8 mile, LNAV/VNAV all Cats and LNAV Cats C-D and Circling Cat D visibility 1/4 mile. Baro-VNAV and VDP NA with Martinsburg altimeter setting.

MISSED APPROACH:
Climb to 4000 direct HAIGS and hold.

ASOS 126.375	POTOMAC APP CON 126.825 239.025	HAGERSTOWN TOWER * 120.3 (CTAF) 225.4	GND CON 120.8	UNICOM 122.95
------------------------	---	---	-------------------------	-------------------------



ELEV 703	D	TDZE 695
----------	----------	----------



CATEGORY	A	B	C	D
LPV DA		895-3/4	200 (200-3/4)	
LNAV/VNAV DA		954-3/4	259 (300-3/4)	
LNAV MDA		1020-1	325 (400-1)	
C CIRCLING	1160-1	457 (500-1)	1200-1 1/2 497 (500-1 1/2)	1320-2 617 (700-2)

REIL Rwy 2 and 20
REIL Rwy 9 **Ⓛ**
MIRL Rwy 2-20
HIRL Rwy 9-27 **Ⓛ**

RNAV (GPS) RWY 9

NE-3, 31 DEC 2020 to 28 JAN 2021

NE-3, 31 DEC 2020 to 28 JAN 2021