

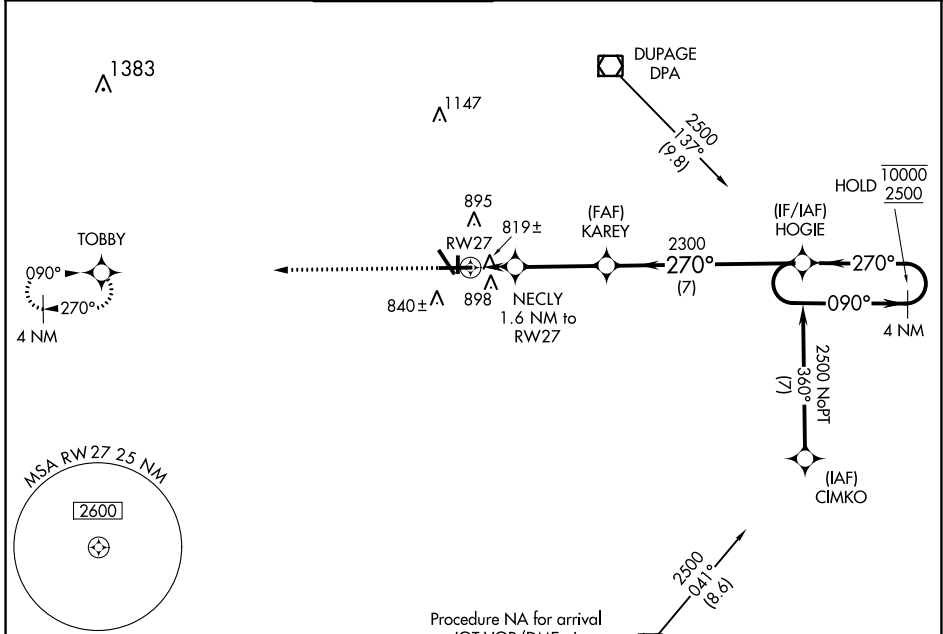
WAAS CH 48822 W27A	APP CRS 270°	Rwy Idg TDZE Apt Elev	6501 707 712
--	------------------------	-----------------------------	---

RNAV (GPS) RWY 27

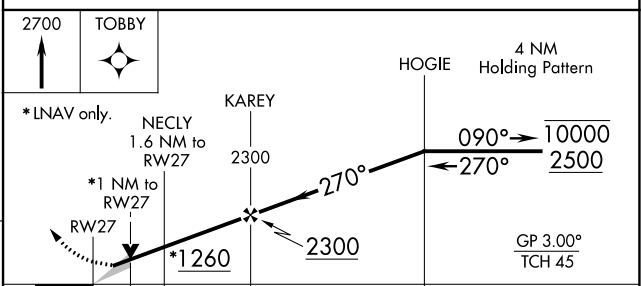
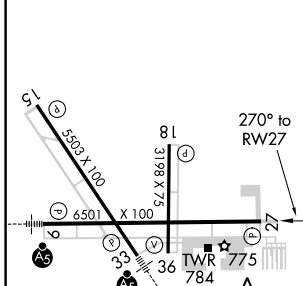
AURORA MUNI (A.R.R.)

RNP APCH.		MISSED APPROACH: Climb to 2700 direct TOBBY and hold.		
<p>▼ For uncompensated Baro-VNAV systems, LNAV/VNAV NA below -16°C or above 54°C.</p>				

ATIS 125.85	CHICAGO APP CON 133.5 349.0	AURORA TOWER★ 120.6 (CTAF) 0	GND CON 121.7	CLNC DEL 121.7 (When tower closed)	UNICOM 122.95 123.5
-----------------------	---------------------------------------	---	-------------------------	---	-------------------------------



ELEV 712	TDZE 707
-----------------	-----------------



CATEGORY	A	B	C	D
LPV DA		907- ³ / ₄	200 (200- ³ / ₄)	
LNAV/VNAV DA		1002-1	295 (300-1)	
LNAV MDA		1080-1	373 (400-1)	
C CIRCLING	1200-1	488 (500-1)	1200-1½ 488 (500-1½)	1320-2 608 (700-2)

MIRL Rwy 18-36 **0**
HIRL Rwy 15-33 and 9-27 **0**
REIL Rwy 15, 18, 27, and 36 **0**

EC-3, 31 DEC 2020 to 28 JAN 2021

EC-3, 31 DEC 2020 to 28 JAN 2021