

VORTAC IGB <b>116.2</b> Chan <b>109</b>	APP CRS <b>096°</b>	Rwy Idg TDZE Apt Elev	<b>N/A</b> <b>N/A</b> <b>188</b>
---	------------------------	-----------------------------	--

# VOR-A

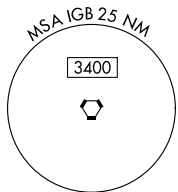
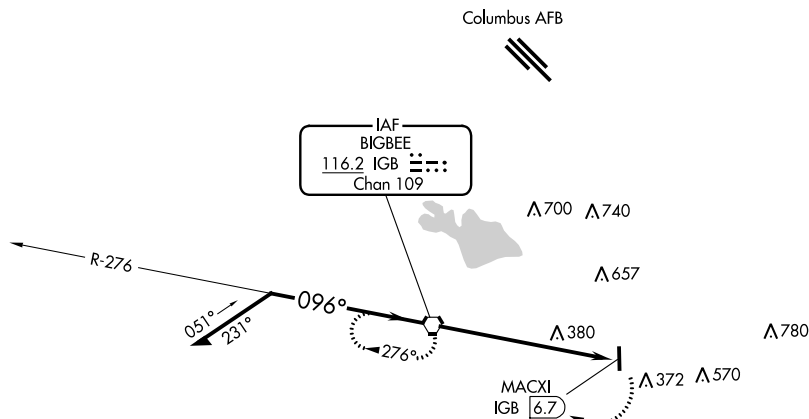
COLUMBUS-LOWNDES COUNTY (UBS)

**▽** Use Columbus AFB altimeter setting; when not received, use Golden Triangle Rgnl altimeter setting and increase all MDA 20 feet.

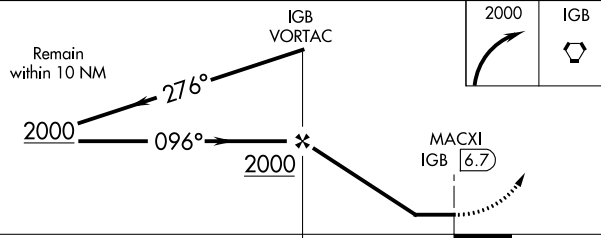
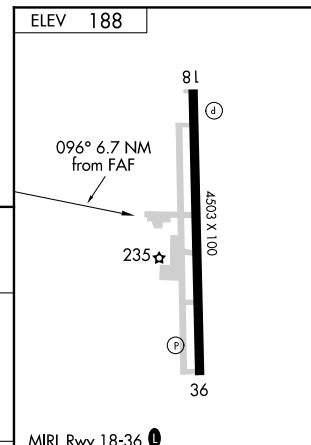
MISSED APPROACH: Climbing right turn to 2000 direct IGB VORTAC and hold.

COLUMBUS APP CON ★  
**135.6 323.275**

UNICOM  
**122.8 (CTAF)**



1005  
 $\Delta$



CATEGORY	A	B	C	D	FAF to MAP 6.7 NM					
<b>C</b> CIRCLING	780-1	592 (600-1)	1040-2½ 852 (900-2½)	1040-2¾ 852 (900-2¾)	Knots	60	90	120	150	180
					Min:Sec	6:42	4:28	3:21	2:41	2:14

SC-4, 31 DEC 2020 to 28 JAN 2021

SC-4, 31 DEC 2020 to 28 JAN 2021