

APP CRS 222°	Rwy Idg 5997
	TDZE 3373
	Apt Elev 3374

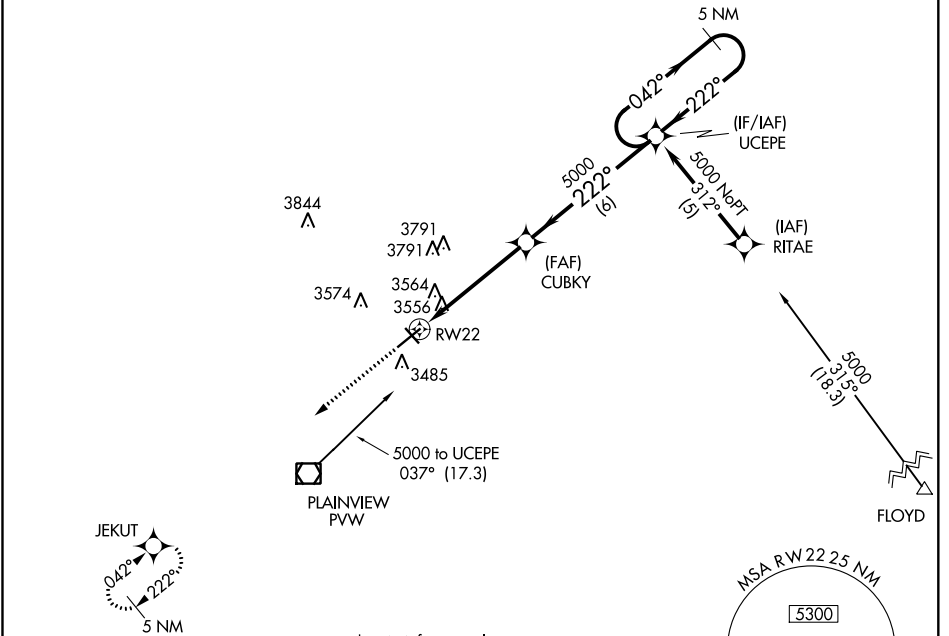
RNAV (GPS) RWY 22

HALE COUNTY (PVW)

⚠ DME/DME RNP-0.3 NA. If local altimeter setting not received, use Lubbock altimeter setting and increase all MDAs 100 feet.
⚠ Visibility reduction by helicopters NA.

MISSED APPROACH: Climb to 5100 direct JEKUT and hold.

ASOS 119.675	LUBBOCK APP CON 119.2 351.8	CLNC DEL 121.7	UNICOM 123.0 (CTAF) 0
------------------------	---------------------------------------	--------------------------	---------------------------------

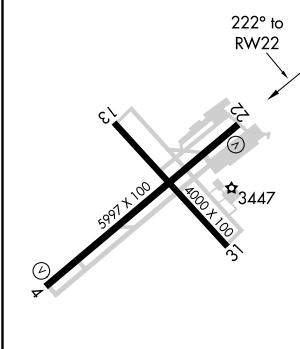


SC-2, 31 DEC 2020 to 28 JAN 2021

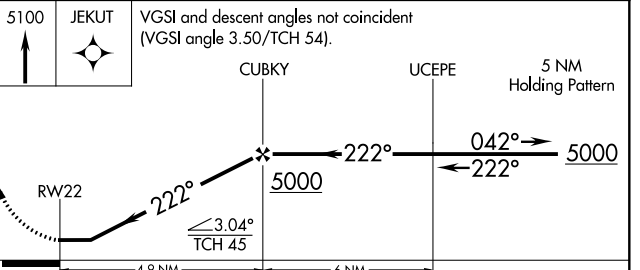
SC-2, 31 DEC 2020 to 28 JAN 2021

ELEV 3374	TDZE 3373
-----------	-----------

Procedure NA for arrivals at PVW VOR/DME via V81 southbound.



5100 JEKUT VGSi and descent angles not coincident (VGSi angle 3.50/TCH 54).



CATEGORY	A	B	C	D
LNAV MDA	3820-1	447 (500-1)	3820-1¼ 447 (500-1¼)	3820-1½ 447 (500-1½)
CIRCLING	3920-1 546 (600-1)	3940-1 566 (600-1)	3940-1½ 566 (600-1½)	3940-2 566 (600-2)

REIL Rwy 4 and 22
LIRL Rwy 4-22 and 13-31 0