

HI-TACAN Z RWY 33

TACAN BAB Chan 23	APCH CRS 317°	Rwy ldg TDZE Arprt Elev	12,001 105 113
----------------------	------------------	-------------------------------	----------------------

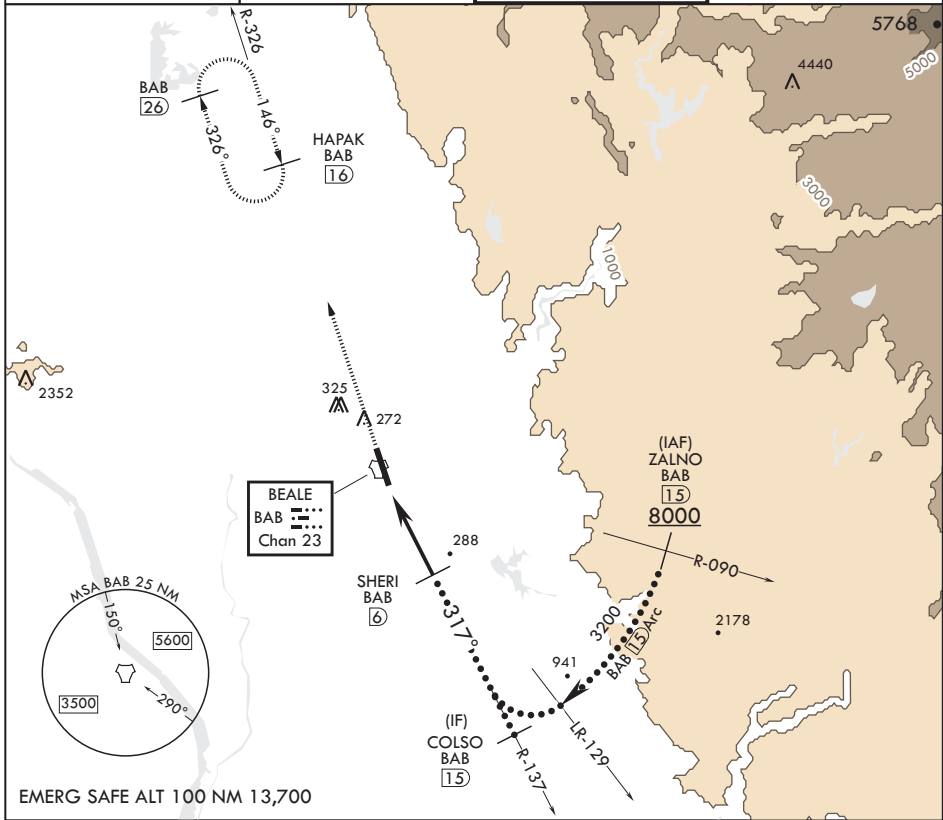
JAL-771 (USAF)

BEALE AFB (KBAB)

* When ALS inop, increase CAT CDE vis to 1 1/4 miles.
 ** Circling not authorized E of Rwy 15-33

 ALSF-1 MISSED APPROACH: Climb to 3600, intercept BAB TACAN R-326 to HAPAK and hold.

ATIS* 124.55 273.5	NORCAL APP CON 125.4 259.1	TOWER* 119.4 284.75	GND CON 121.6 257.75
------------------------------	--------------------------------------	-------------------------------	--------------------------------



EMERG SAFE ALT 100 NM 13,700

3600 ↑ BAB R-326	HAPAK BAB 16	COLSO R-137 15	ELEV 113	TDZE 105
TACAN EGUYO 1.5 2.2		SHERI 6 1800 COLSO 15 3200 ≤ 3.09° TCH 51		
CATEGORY	C	D	E	
S-33*	540/40	435	(500-3/4)	
C CIRCLING**	600-1 1/2 487 (500-1 1/2)	680-2 567 (600-2)	840-2 1/2 727 (800-2 1/2)	

HIRL all Rwys 317° to TACAN

HI-TACAN Z RWY 33

SW-2, 31 DEC 2020 to 28 JAN 2021

SW-2, 31 DEC 2020 to 28 JAN 2021