

SWVAY FOUR ARRIVAL (RNAV)

DALLAS, TEXAS

SC-2, 31 DEC 2020 to 28 JAN 2021

REGIONAL APP CON
 135.975, 379.9
 ADS ATIS
 133.4
 DAL ATIS
 120.15
 RBD ATIS
 126.35

NOTE: RADAR required.

NOTE: RNAV 1.

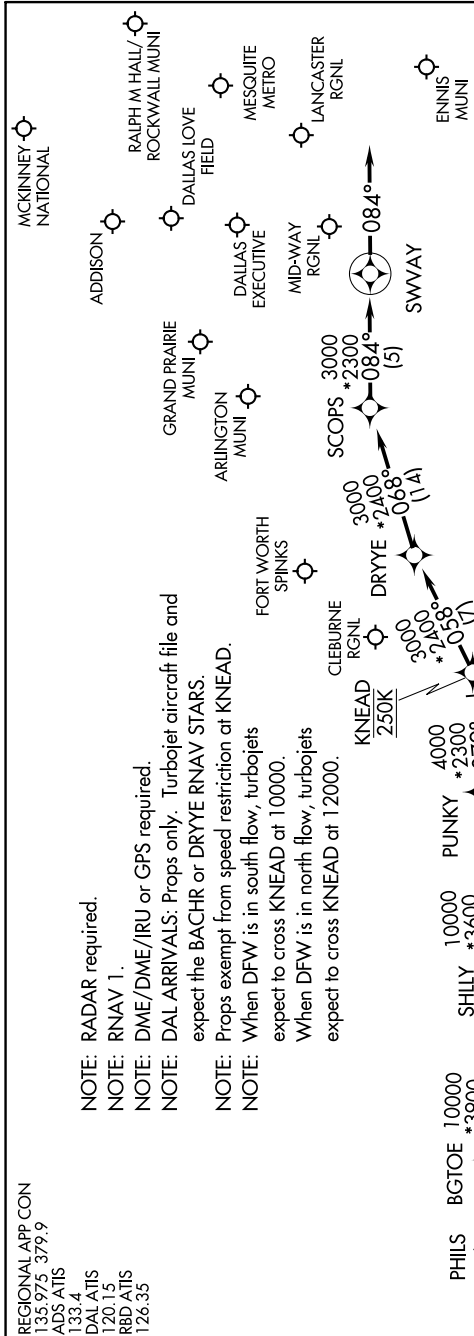
NOTE: DME/DME/IRU or GPS required.

NOTE: DAL ARRIVALS: Props only. Turbojet aircraft file and expect the BACHR or DRYE RNAV STARS.

NOTE: Props exempt from speed restriction at KNEAD.

NOTE: When DFW is in south flow, turbojets expect to cross KNEAD at 10000.

NOTE: When DFW is in north flow, turbojets expect to cross KNEAD at 12000.



ARRIVAL ROUTE DESCRIPTION

BGTOE TRANSITION (BGTOE.SWVAY4)

DITSY TRANSITION (DITSY.SWVAY4)

FRSTI TRANSITION (FRSTI.SWVAY4): (For ACT and GRK Terminal Area departures only).

SHILLY TRANSITION (SHILLY.SWVAY4): (For ABI Terminal Area departures only).

From KNEAD on track 058° to DRYE, then on track 068° to SCOPS, then on track 084° to SWVAY, then on track 084°.

Expect RADAR vectors to final approach course.

NOTE: Chart not to scale.

SC-2, 31 DEC 2020 to 28 JAN 2021

SWVAY FOUR ARRIVAL (RNAV)

(KNEAD.SWVAY4) 16JUL20

DALLAS, TEXAS