

# RNAV (GPS) RWY 33

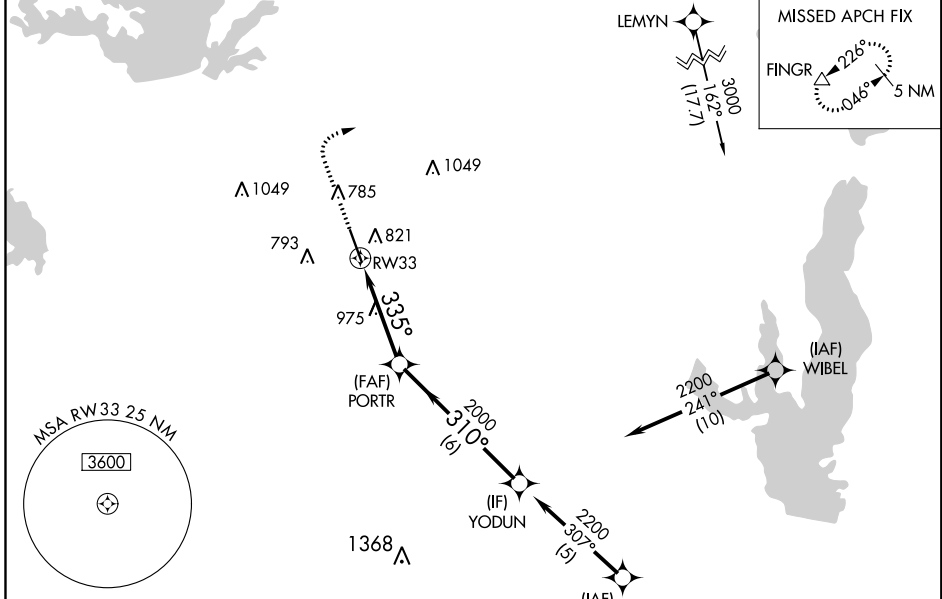
ADDISON (ADS)

APP CRS <b>335°</b>	Rwy Idg <b>6431</b>
	TDZE <b>645</b>
	Apt Elev <b>645</b>

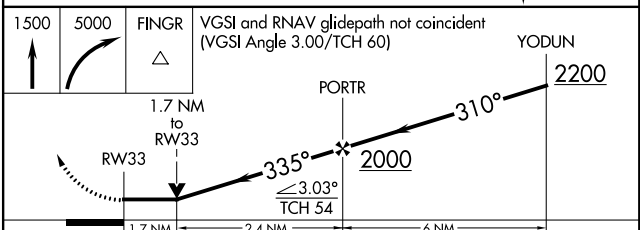
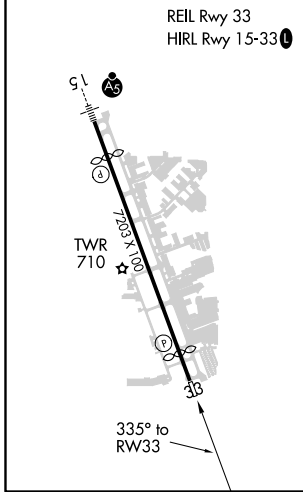
**▼** DME/DME RNP-0.3 NA. VDP NA with Dallas-Love Field altimeter setting.  
**▲** Helicopter visibility reduction below 3/4 SM NA. When local altimeter setting not received, use Dallas-Love Field altimeter setting and increase all MDA 40 feet, increase LNAV Cat C/D visibility 1/8 mile, Circling Cat C visibility 1/8 mile.

MISSED APPROACH: Climb to 1500 then climbing right turn to 5000 direct FINGR and hold.

ATIS <b>133.4</b>	REGIONAL APP CON <b>124.3 282.275</b>	ADDISON TOWER * <b>126.0 (CTAF) 239.0</b>	GND CON <b>121.6</b>	CLNC DEL <b>119.55</b>	UNICOM <b>122.95</b>
----------------------	--	--	-------------------------	---------------------------	-------------------------



ELEV <b>645</b>	<b>D</b> TDZE <b>645</b>
-----------------	--------------------------



CATEGORY	A	B	C	D
LNAV MDA	1240-1	595 (600-1)	1240-1 3/4	595 (600-1 3/4)
<b>C</b> CIRCLING	1240-1	595 (600-1)	1280-1 3/4 635 (700-1 3/4)	1400-2 1/2 755 (800-2 1/2)

SC-2, 31 DEC 2020 to 28 JAN 2021

SC-2, 31 DEC 2020 to 28 JAN 2021