

WAAS CH 70623 W12A	APP CRS 126°	Rwy Idg TDZE Apt Elev	7959 597 597
----------------------------------------	------------------------	-----------------------------	-----------------------------------------

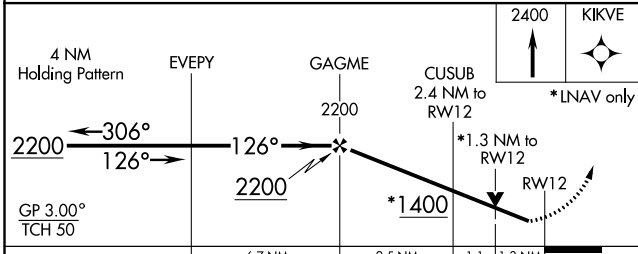
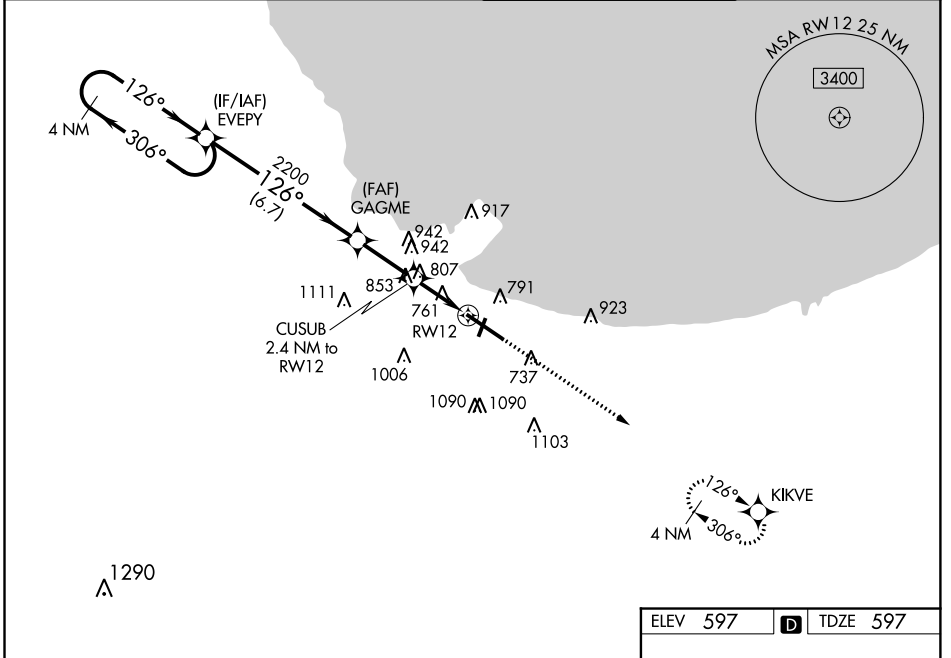
RNAV (GPS) Y RWY 12

GARY/CHICAGO INTL (GYY)

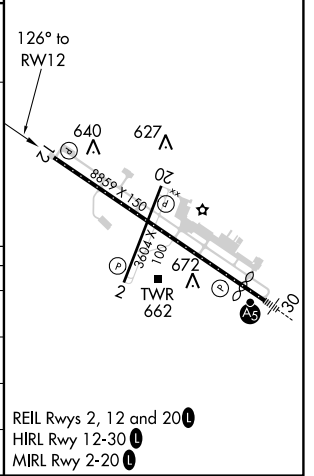
▽ For uncompensated Baro-VNAV systems, LNAV/VNAV NA below -16°C (4°F) or above 54°C (130°F).
▲ DME/DME RNP-0.3 NA.
Rwy 12 helicopter visibility reduction below 3/4 SM NA.

MISSED APPROACH:
Climb to 2400 direct KIKVE and hold.

ATIS 134.575	CHICAGO APP CON 133.1 285.6	GARY TOWER ★ 125.6 (CTAF) 0	GND CON 121.9
------------------------	---------------------------------------	---------------------------------------	-------------------------



ELEV 597	D	TDZE 597
----------	----------	----------



CATEGORY	A	B	C	D
LPV DA		797-3/4	200 (200-3/4)	
LNAV/VNAV DA		1049-13/8	452 (500-13/8)	
LNAV MDA	1060-1	463 (500-1)	1060-13/8	463 (500-13/8)
C CIRCLING	1140-1 543 (600-1)	1180-1 583 (600-1)	1400-21/4 803 (900-21/4)	1420-23/4 823 (900-23/4)

EC-2, 31 DEC 2020 to 28 JAN 2021

EC-2, 31 DEC 2020 to 28 JAN 2021