

APP CRS <b>126°</b>	Rwy ldg TDZE Apt Elev	<b>7959</b> <b>597</b> <b>597</b>
------------------------	-----------------------------	---

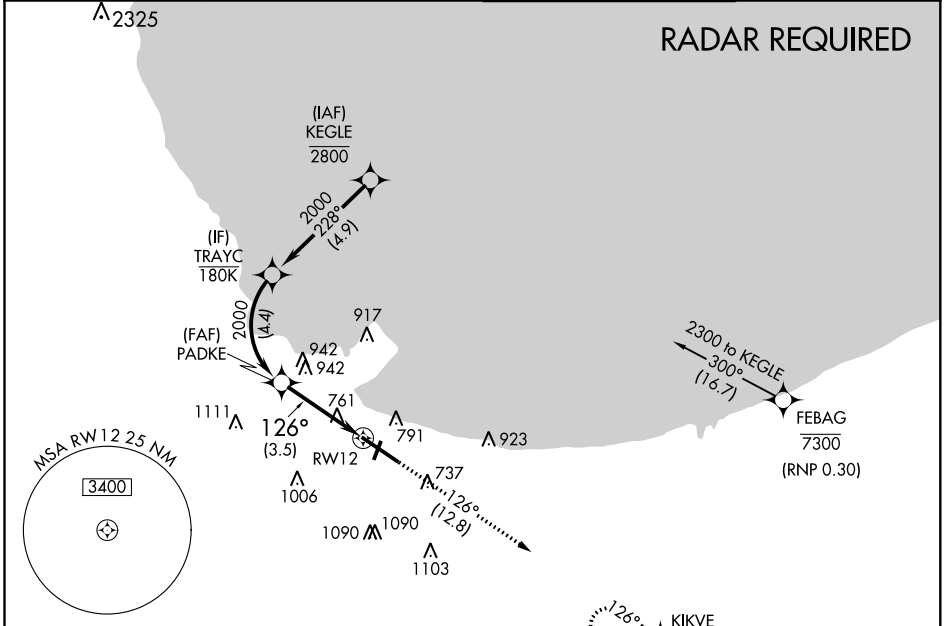
# RNAV (RNP) Z RWY 12

GARY/CHICAGO INTL (GYY)

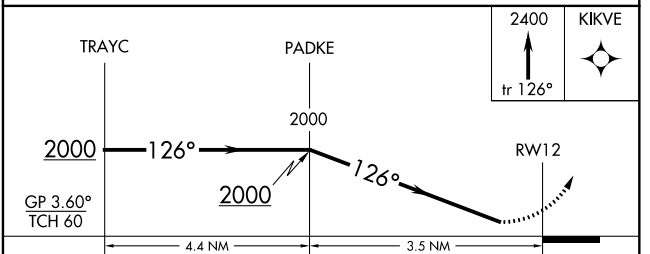
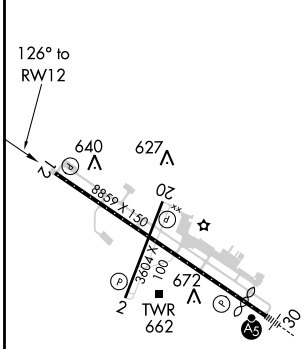
**▽** For uncompensated Baro-VNAV systems, procedure NA below -16°C (4°F) or above 45°C (113°F). RF and GPS required. Procedure NA for wingspans greater than 136 feet.

**MISSED APPROACH:**  
Climb to 2400 on track 126° to KIKVE and hold.

ATIS <b>134.575</b>	CHICAGO APP CON <b>133.1 285.6</b>	GARY TOWER ★ <b>125.6 (CTAF) 0</b>	GND CON <b>121.9</b>
------------------------	---------------------------------------	---------------------------------------	-------------------------



ELEV 597	<b>D</b>	TDZE 597
----------	----------	----------



CATEGORY	A	B	C	D
RNP 0.13 DA	978-1½	381 (400-1½)		NA
RNP 0.30 DA	1056-1¾	459 (500-1¾)		NA

REIL Rwy 2, 12 and 20  
HIRL Rwy 12-30  
MIRL Rwy 2-20

EC-2, 31 DEC 2020 to 28 JAN 2021

EC-2, 31 DEC 2020 to 28 JAN 2021

**AUTHORIZATION REQUIRED**