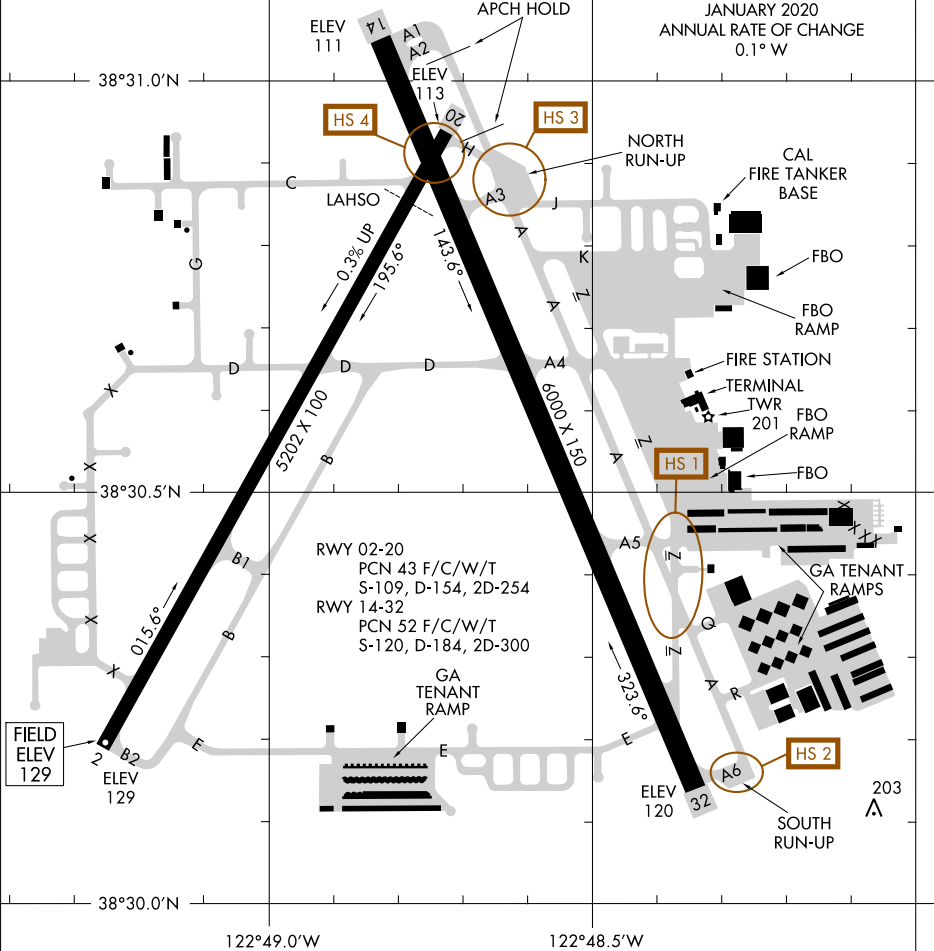
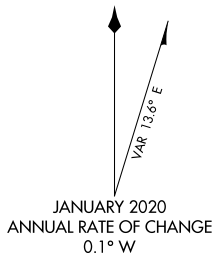


20310  
**AIRPORT DIAGRAM**

CHARLES M SCHULZ-SONOMA COUNTY (STS)  
 AL-696 (FAA) SANTA ROSA, CALIFORNIA

ATIS  
 120.55  
 SANTA ROSA TOWER ★  
 118.5 363.0  
 GND CON  
 121.9  
**D**



SW-2, 31 DEC 2020 to 28 JAN 2021

SW-2, 31 DEC 2020 to 28 JAN 2021

**CAUTION: BE ALERT TO RUNWAY CROSSING CLEARANCES.  
 READBACK OF ALL RUNWAY HOLDING INSTRUCTIONS IS REQUIRED.**

**AIRPORT DIAGRAM**  
 20310

SANTA ROSA, CALIFORNIA  
 CHARLES M SCHULZ-SONOMA COUNTY (STS)