

| | | | |
|--|------------------------|-----------------------------|---|
| WAAS CH 42800 W01A | APP CRS 014° | Rwy ldg TDZE Apt Elev | 8782 2170 2181 |
|--|------------------------|-----------------------------|---|

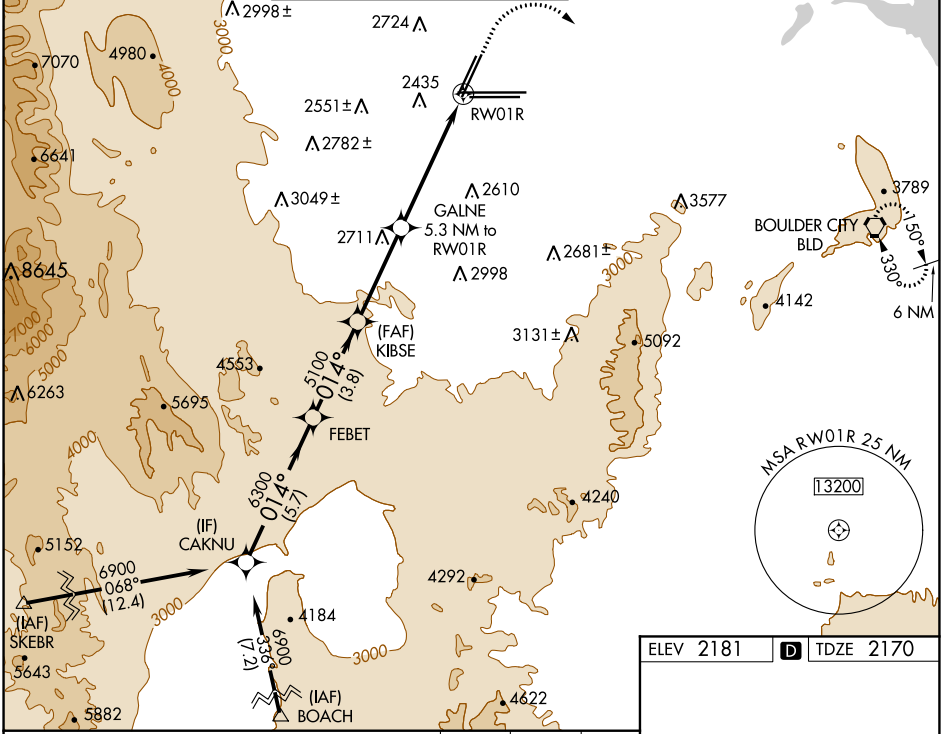
RNAV (GPS) RWY 1R

MC CARRAN INTL (LAS)

⚠ For uncompensated Baro-VNAV systems, LNAV/VNAV NA below -1°C (31°F) or above 52°C (126°F). Rwy 1R helicopter visibility reduction below ¾ SM NA. DME/DME RNP-0.3 NA.

MISSED APPROACH: Climb to 2800 then climbing right turn to 6000 direct BLD VORTAC and hold, continue climb-in-hold to 6000.

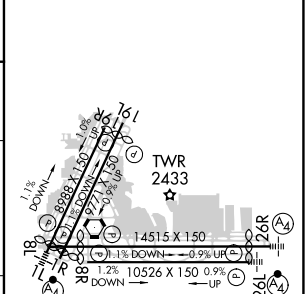
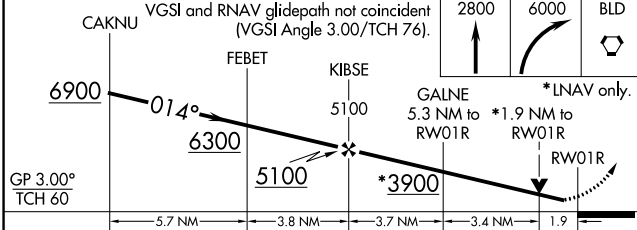
| | | | | | |
|------------------------|--|--|---|--------------------------|-------|
| D-ATIS 132.4 | LAS VEGAS APP CON 125.025 379.15 (West) 125.6 282.2 (East) | LAS VEGAS TOWER 118.75 257.8 (Rwy 1L/19R, 1R/19L) 119.9 257.8 (Rwy 8L/26R, 8R/26L) | GND CON 121.1 270.8 E of 1R/19L 121.9 254.3 W of 1R/19L | CLNC DEL 118.0 | CPDLC |
|------------------------|--|--|---|--------------------------|-------|



SW-4, 31 DEC 2020 to 28 JAN 2021

SW-4, 31 DEC 2020 to 28 JAN 2021

| | |
|-----------|--------------------|
| ELEV 2181 | D TDZE 2170 |
|-----------|--------------------|



| | | | | | |
|--------------------|--|-----------------------------|------------------------------|-------------------------|-----|
| CAKNU | VGSI and RNAV glidepath not coincident (VGSI Angle 3.00/TCH 76). | | 2800 | 6000 | BLD |
| GP 3.00° TCH 60 | 6900 | 6300 | 5100 | *3900 | |
| CATEGORY | A | B | C | D | |
| LPV DA | 2468-7/8 | | 298 (300-7/8) | | |
| LNAV/VNAV DA | 2633-11/2 | | 463 (500-11/2) | | |
| LNAV MDA | 2860-1 690 (700-1) | | 2860-2 690 (700-2) | | |
| C CIRCLING | 3020-11/4 839 (900-11/4) | 3040-11/4 859 (900-11/4) | 3100-23/4 919 (1000-23/4) | 3540-3 1359 (1400-3) | |

REIL Rwy 1R, 8R, 19L and 19R
MIRL Rwy 1R-19L
HIRL Rwy 1L-19R, 8L-26R and 8R-26L