

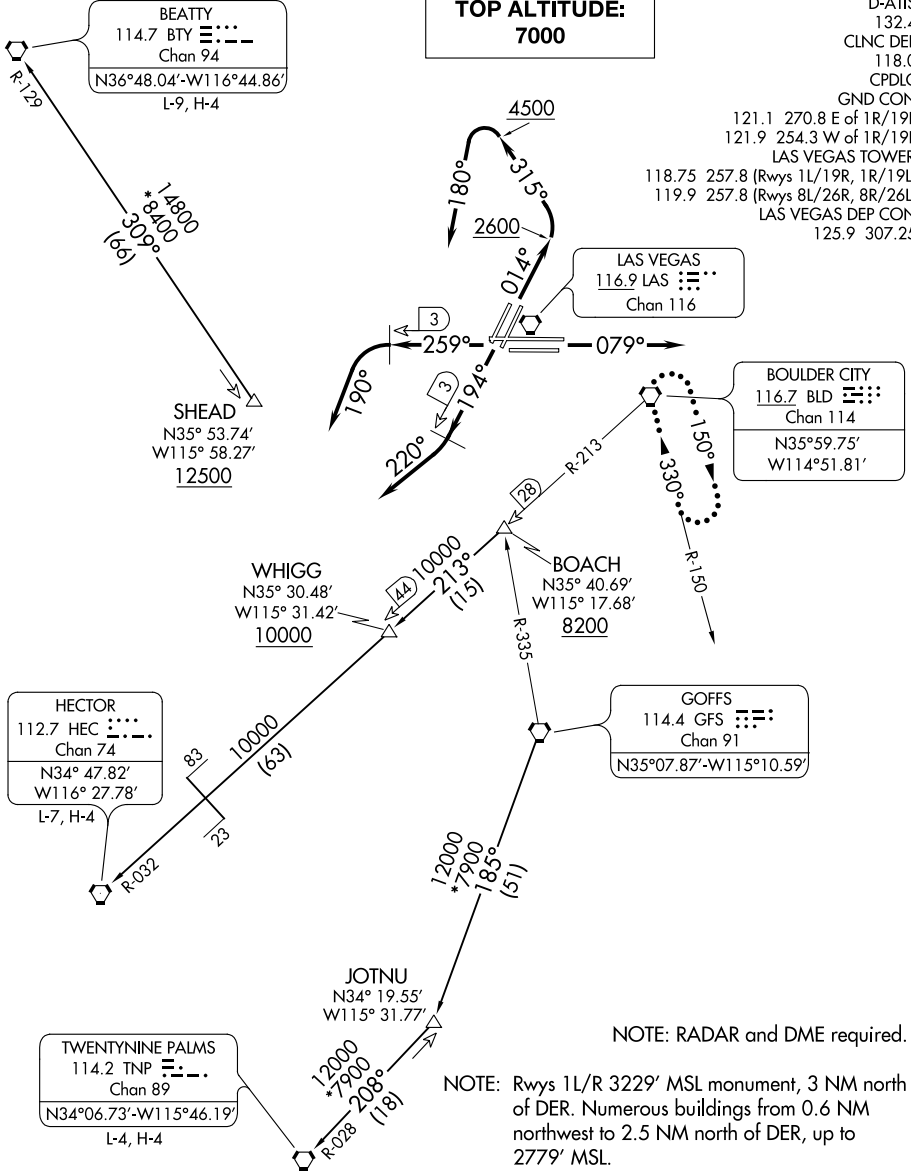
# MCCARRAN FIVE DEPARTURE

AL-662 (FAA)

MC CARRAN INTL (LAS)  
LAS VEGAS, NEVADA

**TOP ALTITUDE:  
7000**

D-ATIS  
132.4  
CLNC DEL  
118.0  
CPDLC  
GND CON  
121.1 270.8 E of 1R/19L  
121.9 254.3 W of 1R/19L  
LAS VEGAS TOWER  
118.75 257.8 (Rwys 1L/19R, 1R/19L)  
119.9 257.8 (Rwys 8L/26R, 8R/26L)  
LAS VEGAS DEP CON  
125.9 307.25



### TAKEOFF MINIMUMS

Rwys 1L/R: Standard with minimum climb of 529' per NM to 7000.  
 Rwys 8L/R: Standard with minimum climb of 440' per NM to 7000.  
 Rwys 19L/R, 26L/R: Standard with minimum climb of 360' per NM to 7000.

NOTE: RADAR and DME required.  
 NOTE: Rwys 1L/R 3229' MSL monument, 3 NM north of DER. Numerous buildings from 0.6 NM northwest to 2.5 NM north of DER, up to 2779' MSL.

(NARRATIVE ON FOLLOWING PAGE)

NOTE: Chart not to scale.

# MCCARRAN FIVE DEPARTURE

SW-4, 31 DEC 2020 to 28 JAN 2021

SW-4, 31 DEC 2020 to 28 JAN 2021