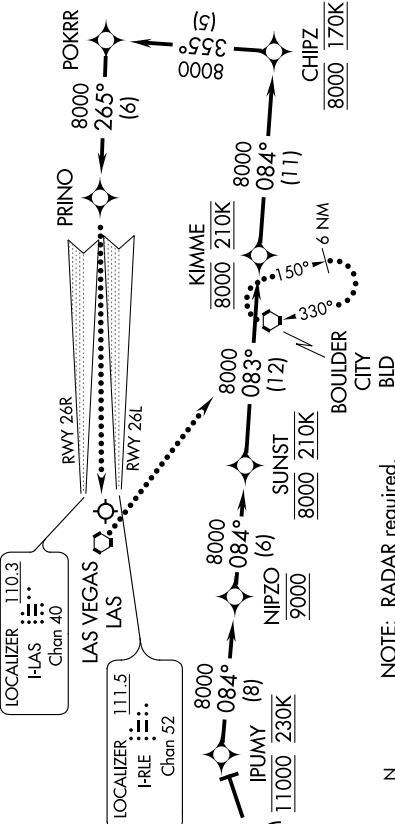


KEPEC SIX ARRIVAL (RNAV)

SW-4, 31 DEC 2020 to 28 JAN 2021

D-ATIS
132.4
LAS VEGAS APP CON
125.025 379.15
LAS VEGAS TOWER
118.75 257.8 (Rwy 1L/19R, 1R/19L)
119.9 257.8 (Rwy 8L/26R, 8R/26L)



NOTE: RADAR required.
NOTE: RNAV 1.
NOTE: DME/DME/IRU or GPS required.
NOTE: MISEN transition: for non-GPS equipped aircraft, BTY, BLD, DAG, and LSV DMEs must be operational.
NOTE: TNP transition: for non-GPS equipped aircraft, BTY, BLD, LAS, and LSV DMEs must be operational.

ARRIVAL ROUTE DESCRIPTION

MISEN TRANSITION (MISEN.KEPEC6)

TWENTYNINE PALMS TRANSITION (TNP.KEPEC6)

From KEPEC on track 058° to cross IPUMY at 11000 and at 230K, then as depicted to PRINO. Intercept the Rwy 26L localizer.

LOST COMMUNICATIONS

At PRINO, execute ILS RWY 26L approach, if unable, proceed direct LAS VORTAC, then direct BLD VORTAC and hold, maintain 8000.

NOTE: Chart not to scale.

KEPEC SIX ARRIVAL (RNAV)

SW-4, 31 DEC 2020 to 28 JAN 2021