

LOC/DME FAS <b>110.3</b> Chan 40	APP CRS <b>259°</b>	Rwy Idg TDZE Apt Elev	26R <b>12639</b> <b>2067</b> <b>2181</b>	26L <b>10525</b> <b>2069</b> <b>2181</b>
--	------------------------	-----------------------------	---	---

# ILS or LOC RWY 26R

MC CARRAN INTL (LAS)

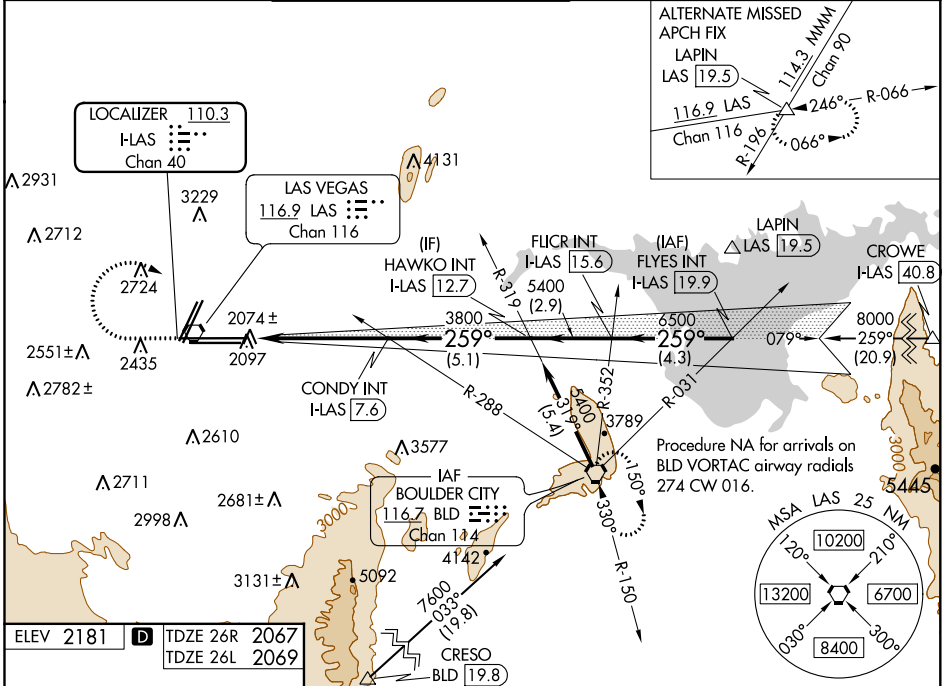
**▼** Inop table does not apply to Sidestep Rwy 26L.  
**▲** For inop ALS, increase S-ILS 26R all Cats visibility to 1 SM, and S-LOC 26R Cat D and E visibility to 1/2 SM.

MALS Rwy 26R

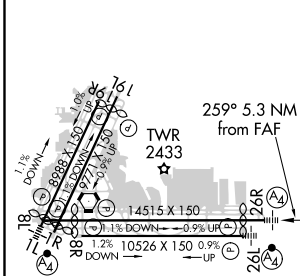
MALSF Rwy 26L

MISSED APPROACH: Climb to 3200 then climbing right turn to 6000 direct BLD VORTAC and hold, continue climb-in-hold to 6000.

D-ATIS <b>132.4</b>	LAS VEGAS APP CON <b>125.025 379.15</b> (West) <b>125.6 282.2</b> (East)	LAS VEGAS TOWER <b>118.75 257.8</b> (Rwy 1L/19R, 1R/19L) <b>119.9 257.8</b> (Rwy 8L/26R, 8R/26L)	GND CON <b>121.1 270.8</b> E of 1R/19L <b>121.9 254.3</b> W of 1R/19L	CLNC DEL <b>118.0</b>	CPDLC
------------------------	--	--	---	--------------------------	-------



ELEV 2181	<b>D</b> TDZE 26R 2067
	TDZE 26L 2069



REIL Rws 1R, 8R, 19L and 19R  
 MIRL Rwy 1R-19L  
 HIRL Rws 1L-19R, 8L-26R and 8R-26L

FAF to MAP 5.3 NM

Knots	60	90	120	150	180
Min:Sec	5:18	3:32	2:39	2:07	1:46

