

RNAV (RNP) Z RWY 17L

AUSTIN-BERGSTROM INTL (AUS)

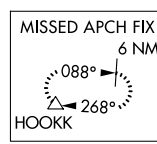
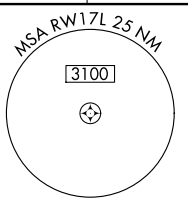
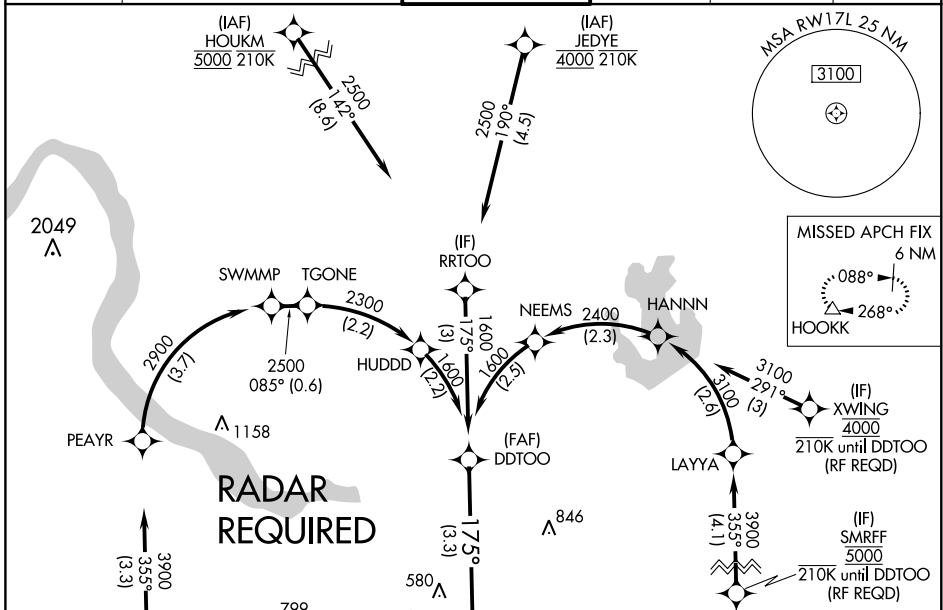
APP CRS	Rwy Idg	9000
175°	TDZE	492
	Apt Elev	542

▼ For uncompensated Baro-VNAV systems, procedure NA below -6°C (22°F) or above 54°C (130°F). Simultaneous approach authorized. GPS required. For inop ALS, increase RNP 0.30 all Cats visibility to 1 1/4 SM.

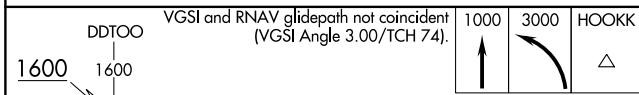
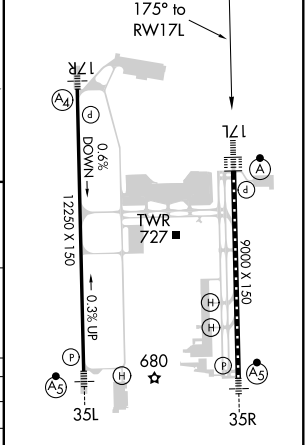


MISSED APPROACH:
Climb to 1000 then climbing left turn to 3000 direct HOOKK and hold.

D-ATIS	AUSTIN APP CON	AUSTIN TOWER	GND CON	CLNC DEL	CPDLC
124.4	127.225 317.65 (EAST) 120.875 270.25 (SOUTH) 119.0 370.85 (WEST)	121.0 281.5	121.9 348.6	125.5 263.0	



ELEV 542	D TDZE 492
----------	-------------------



See planview for multiple IF locations.

CATEGORY	A	B	C	D
RNP 0.24 DA		830/30	338 (300-3/4)	
RNP 0.30 DA		890/45	398 (400-3/4)	

AUTHORIZATION REQUIRED

HIRL Rwy 17L-35R and 17R-35L
TDZ/CL Rwy 17L and 35R

SC-3, 31 DEC 2020 to 28 JAN 2021

SC-3, 31 DEC 2020 to 28 JAN 2021