

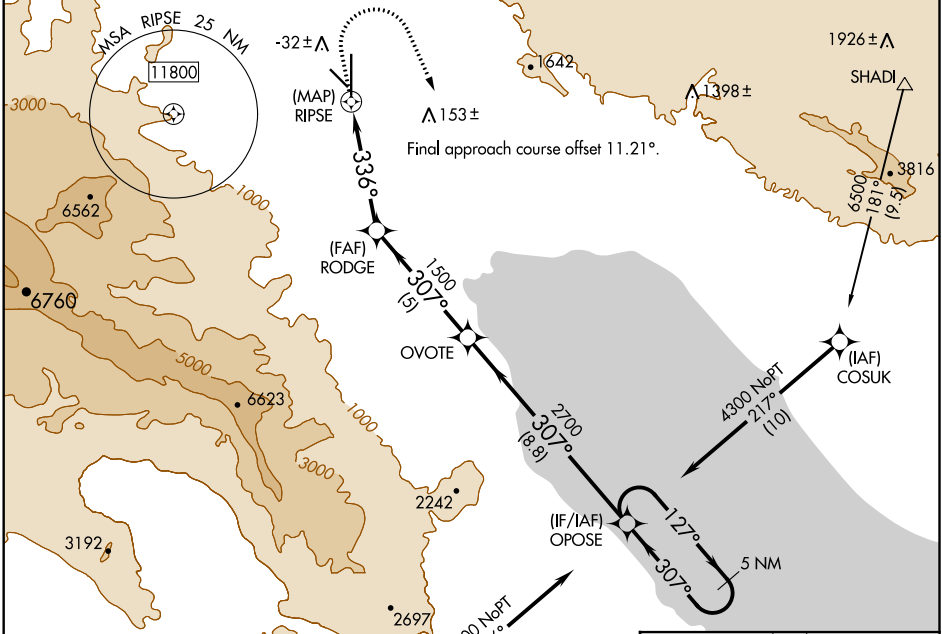
APP CRS	Rwy Idg	8500
336°	TDZE	-128
	Aprt Elev	-115

RNAV (GPS) RWY 35

JACQUELINE COCHRAN RGNL (TRM)

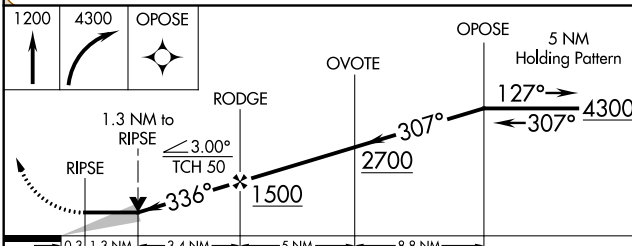
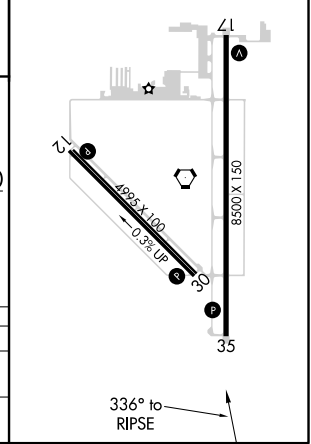
RNP APCH.	MISSED APPROACH: Climb to 1200 then climbing right turn to 4300 direct OPOSE and hold.
-----------	--

ASOS 118.325	SOCAL APP CON 135.275 251.1	CLNC DEL 120.225	UNICOM 123.0 (CTAF) 0
------------------------	---------------------------------------	----------------------------	---------------------------------



ELEV -115	TDZE -128
-----------	-----------

MIRL Rwy 12-30 and 17-35
REIL Rwy 17 and 35



CATEGORY	A	B	C	D
LNVA MDA	440-1	568 (600-1)	940-3	1068 (1100-3)
C CIRCLING	440-1	555 (600-1)	940-3	1055 (1100-3)

SW-3, 31 DEC 2020 to 28 JAN 2021

SW-3, 31 DEC 2020 to 28 JAN 2021