

APP CRS 303°	Rwy Idg 6998
	TDZE 2629
	Apt Elev 2643

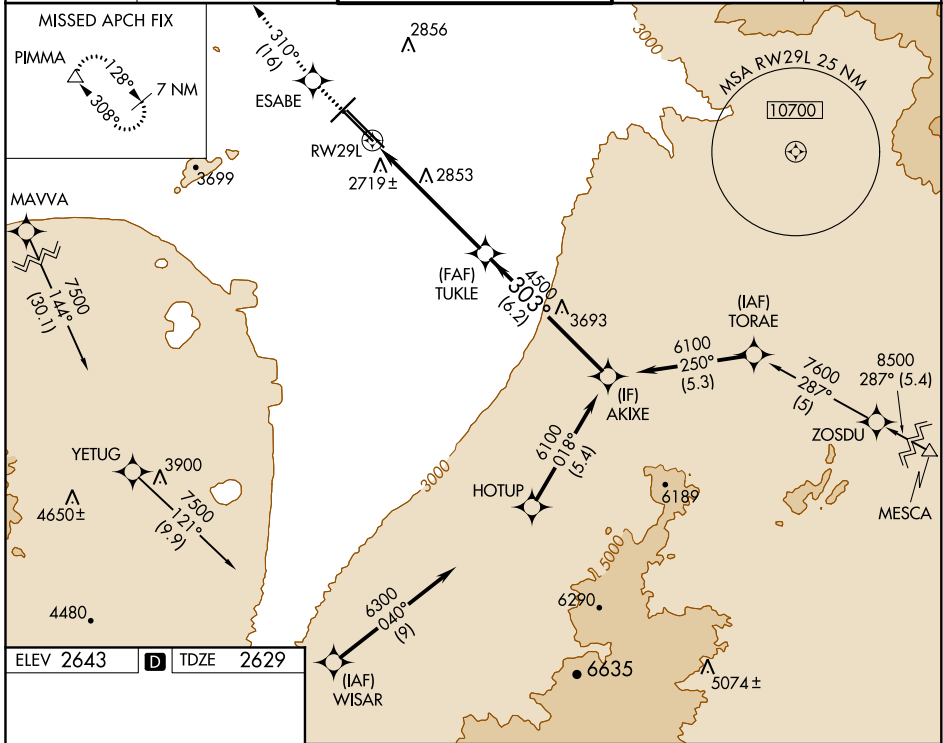
RNAV (GPS) RWY 29L

TUCSON INTL (TUS)

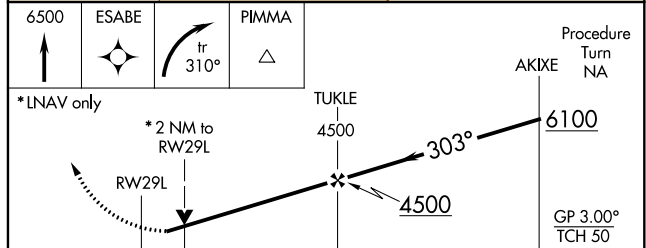
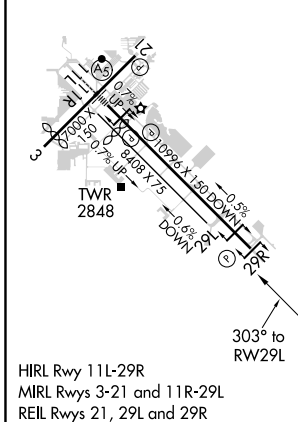
▽ For uncompensated Baro-VNAV systems, LNAV/VNAV NA below -20°C (-4°F) or above 27°C (80°F). DME/DME RNP-0.3 NA. Helicopter visibility reduction below ¾ SM NA.

▲ MISSED APPROACH: Climb to 6500 direct ESABE then climbing right turn on track 310° to PIMMA and hold.

ATIS 123.8 279.65	TUCSON APP CON 119.4 318.1	TUCSON TOWER 118.3 257.8	GND CON 124.4 348.6	CLNC DEL 126.65 326.2
-----------------------------	--------------------------------------	------------------------------------	-------------------------------	---------------------------------



ELEV 2643	D	TDZE 2629
-----------	----------	-----------



CATEGORY	A	B	C	D
LNAV/DA VNAV	3040-1 ³ / ₈ 411 (400-1 ³ / ₈)			
LNAV MDA	3320-1	691 (700-1)	3320-2	691 (700-2)
CIRCLING	3320-1	677 (700-1)	3320-2 677 (700-2)	3320-2 ¹ / ₄ 677 (700-2 ¹ / ₄)

TUCSON, ARIZONA
Amdt 1A 21AUG14

32°07'N-110°56'W

RNAV (GPS) RWY 29L

SW-4, 31 DEC 2020 to 28 JAN 2021

SW-4, 31 DEC 2020 to 28 JAN 2021