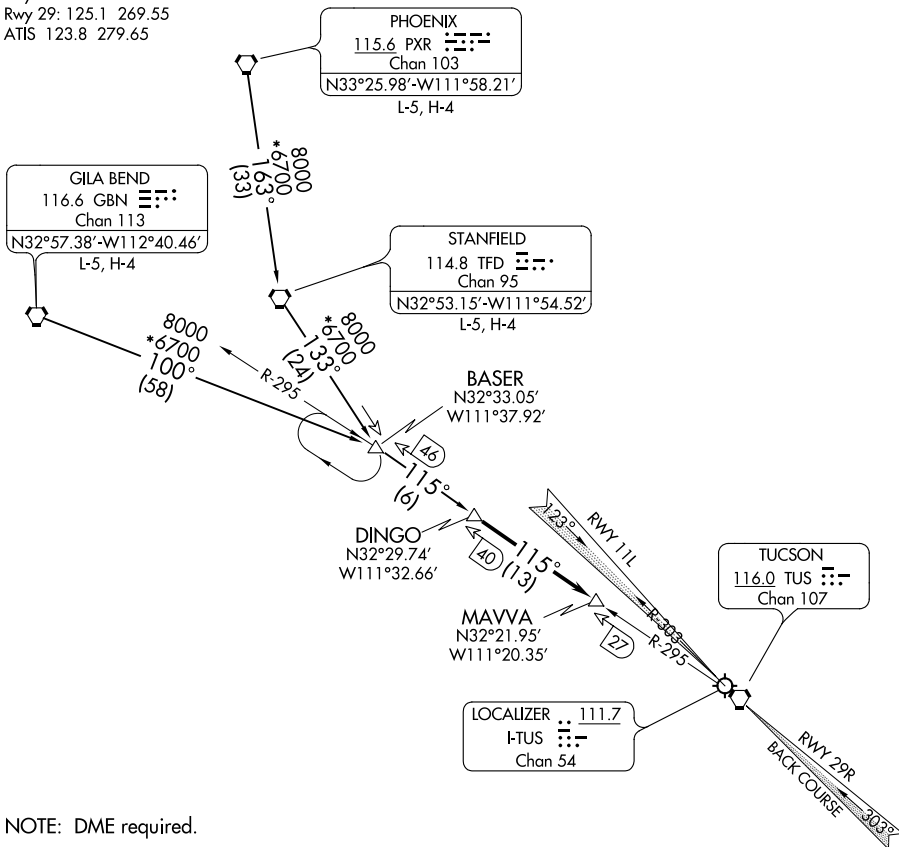


# DINGO FIVE ARRIVAL

AL-430 (FAA)

TUCSON INTL (TUS)  
TUCSON, ARIZONA

TUCSON APP CON  
Rwy 11: 119.4 318.1  
Rwy 29: 125.1 269.55  
ATIS 123.8 279.65



SW-4, 31 DEC 2020 to 28 JAN 2021

SW-4, 31 DEC 2020 to 28 JAN 2021

NOTE: DME required.

NOTE: Chart not to scale.

## ARRIVAL ROUTE DESCRIPTION

**GILA BEND TRANSITION (GBN.DINGO5):** From over GBN VORTAC via GBN R-100 to BASER INT, then via TUS R-295 to DINGO INT. Thence....

**PHOENIX TRANSITION (PXR.DINGO5):** From over PXR VORTAC via PXR R-163 to TFD VORTAC. Then via TFD R-133 to BASER INT. Then via TUS R-295 to DINGO INT. Thence....

**STANFIELD TRANSITION (TFD.DINGO5):** From over TFD VORTAC via TFD R-133 to BASER INT. Then via TUS R-295 to DINGO INT. Thence....

....From over DINGO INT via TUS R-295 to MAVVA INT. Thence, for Runway 11L via heading 075° to intercept I-TUS localizer or TUS VORTAC R-303, and expect approach clearance for Rwy 11L. For Runway 29R expect RADAR vectors to final approach course Runway 29R.

# DINGO FIVE ARRIVAL

(DINGO.DINGO5) 09JAN92

TUCSON, ARIZONA  
TUCSON INTL (TUS)