

# BURRO FOUR DEPARTURE (RNAV)

AL-430 (FAA)

TUCSON INTL (TUS)  
TUCSON, ARIZONA

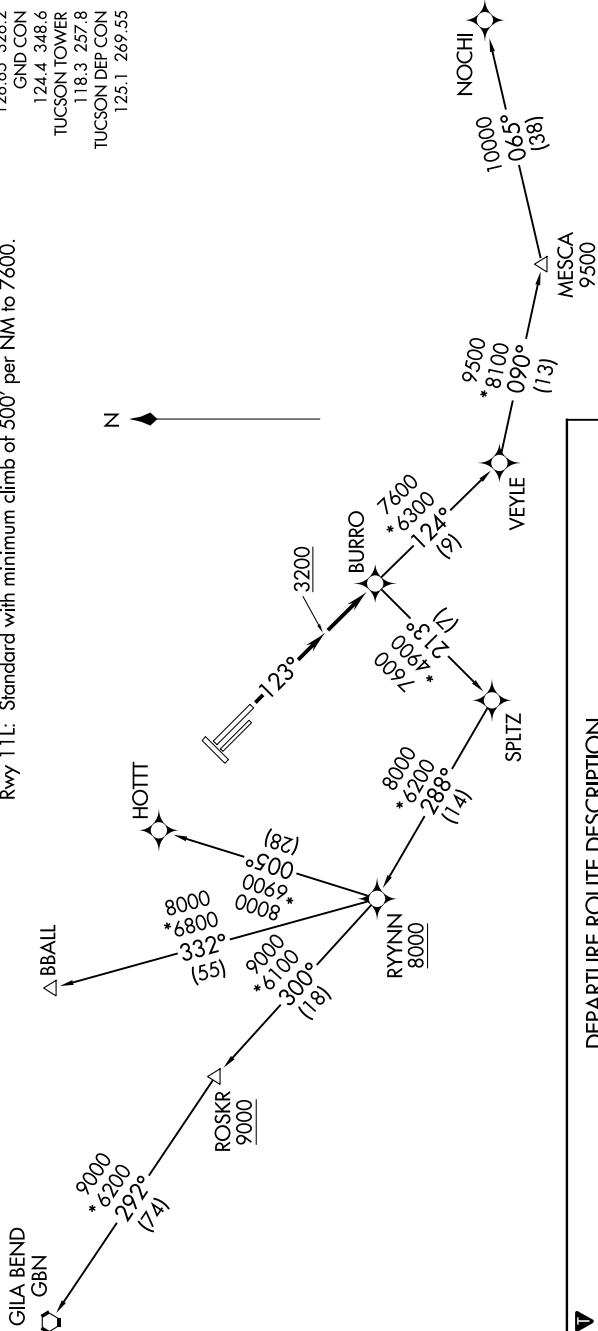
ATIS  
123.8 279.65  
CLNC DEL  
126.65 326.2  
GND CON  
124.4 348.6  
TUCSON TOWER  
118.3 257.8  
TUCSON DEP CON  
125.1 269.55

### TAKEOFF MINIMUMS

Rwys 3, 11R, 21, 29L, 29R: NA - ATC.

Rwy 11L: Standard with minimum climb of 500' per NM to 7600.

**TOP ALTITUDE:  
17000**



NOTE: GPS required.  
NOTE: RNAV 1.  
NOTE: Chart not to scale.

### DEPARTURE ROUTE DESCRIPTION

TAKEOFF RUNWAY 11L: Climb heading 123° to 3200 MSL, then direct BURRO, thence . . .

. . . via (transition) maintain 17000, expect filed altitude 10 minutes after departure.

BBALL TRANSITION (BURRO4.BBALL)

GILA BEND TRANSITION (BURRO4.GBN)

HOTT TRANSITION (BURRO4.HOTT)

NOCHI TRANSITION (BURRO4.NOCHI)

# BURRO FOUR DEPARTURE (RNAV)

TUCSON, ARIZONA  
TUCSON INTL (TUS)