

WAAS CH <b>69629</b> <b>W32A</b>	APP CRS <b>317°</b>	Rwy Idg TDZE Apt Elev	<b>6236</b> <b>2605</b> <b>2613</b>
--	------------------------	-----------------------------	---

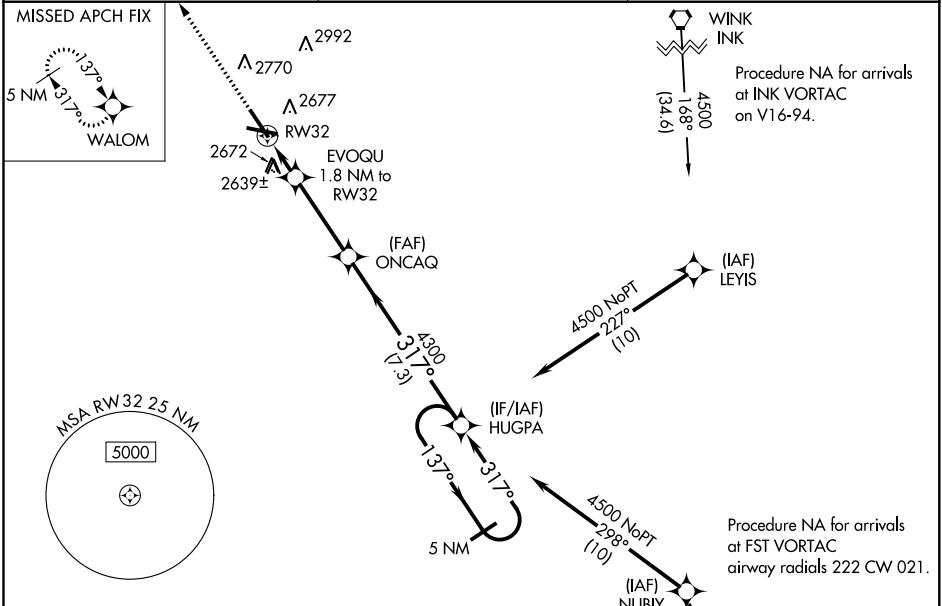
# RNAV (GPS) RWY 32

PECOS MUNI (P.E.Q)

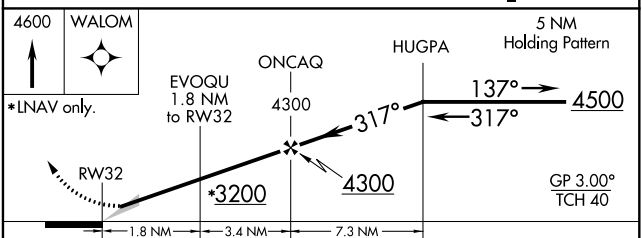
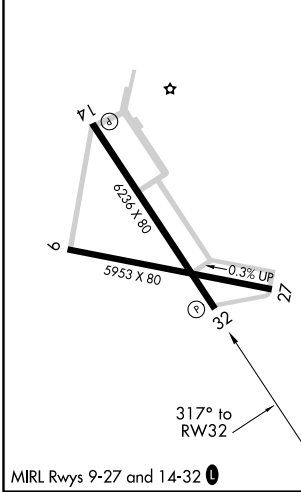
⚠ For uncompensated Baro-VNAV systems, procedure NA below -20°C (-4°F) or above 27°C (80°F).  
 ⚠ DME/DME RNP-0.3 NA. When local altimeter setting not received, use Wink altimeter setting: increase LPV DA to 2900 feet, LNAV/VNAV DA to 2950 feet and all visibilities ½ SM; increase all MDA 100 feet and visibility Cat C and LNAV Cat D ¼ SM. Baro-VNAV NA when using Wink altimeter setting.  
 Circling Rwy 9, 27 NA at night.

**MISSED APPROACH:**  
 Climb to 4600 direct WALOM and hold.

AWOS-3 <b>118.175</b>	ALBUQUERQUE CENTER <b>135.875 292.15</b>	UNICOM <b>122.8 (CTAF)</b> <b>①</b>
--------------------------	---	--



ELEV 2613	TDZE 2605
-----------	-----------



CATEGORY	A	B	C	D
LPV DA		2805-¾	200 (200-¾)	
LNAV/VNAV DA		2855-7/8	250 (300-7/8)	
LNAV MDA		2940-1	335 (400-1)	
CIRCLING	3020-1 407 (500-1)	3080-1 467 (500-1)	3120-1½ 507 (600-1½)	3180-2 567 (600-2)

SC-3, 31 DEC 2020 to 28 JAN 2021

SC-3, 31 DEC 2020 to 28 JAN 2021