

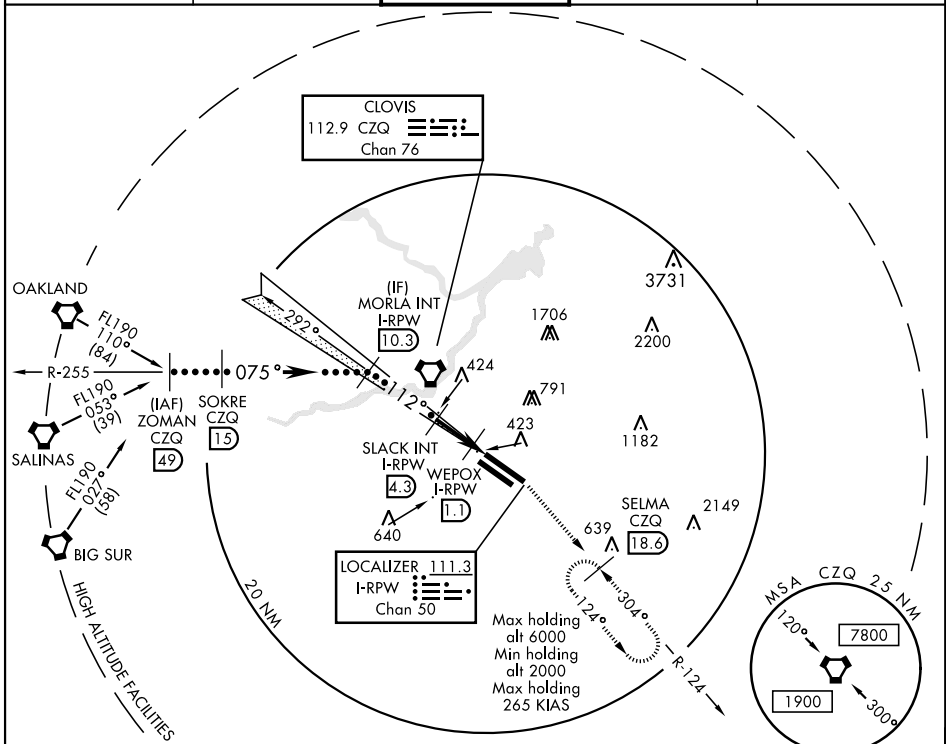
HI-LOC Z RWY 11L

LOC/DME I-RPW 111.3 Chan 50	APCH CRS 112°	Rwy Idg 11L 9539 11R 8008 TDZE 11L 336 11R 333 Arprt Elev 336
---	-------------------------	---

JAL-162 [USAF] FRESNO YOSEMITE INTL (KFAT)

MISSED APPROACH: Climb to 2000 on heading 112° and CZQ VORTAC R-124 to SELMA 18.6 DME and hold.

ATIS 121.35 273.6	FRESNO APP CON 119.6 351.95	FRESNO TOWER 118.2 251.1	GND CON 121.7 348.6	CLNC DEL 124.35 348.6
-----------------------------	---------------------------------------	------------------------------------	-------------------------------	---------------------------------



SW-2, 31 DEC 2020 to 28 JAN 2021

SW-2, 31 DEC 2020 to 28 JAN 2021

DME REQUIRED

EMERG SAFE ALT 100 NM 16,700

ZOMAN CZQ R-255 FL190 49	SOKRE CZQ 15	MORLA INT I-RPW 10.3	SLACK INT I-RPW 4.3	WEPOX I-RPW 1.1	I-RPW 0.2	2000	SELMA CZQ R-124 18.6	ELEV 336	TDZE 11L 336 TDZE 11R 333
							Rwy 29R Idg 9227'		
CATEGORY	C		D		E				
S-LOC 11L	680/55		344	(400-1¼)					
SIDE STEP RWY 11R	680-1½ 347 (400-1½)		680-2	347	(400-2)				
C CIRCLING	920-1½ 584 (600-1½)		920-2	804	1140-2¾ (900-2¾)				

HI-LOC Z RWY 11L