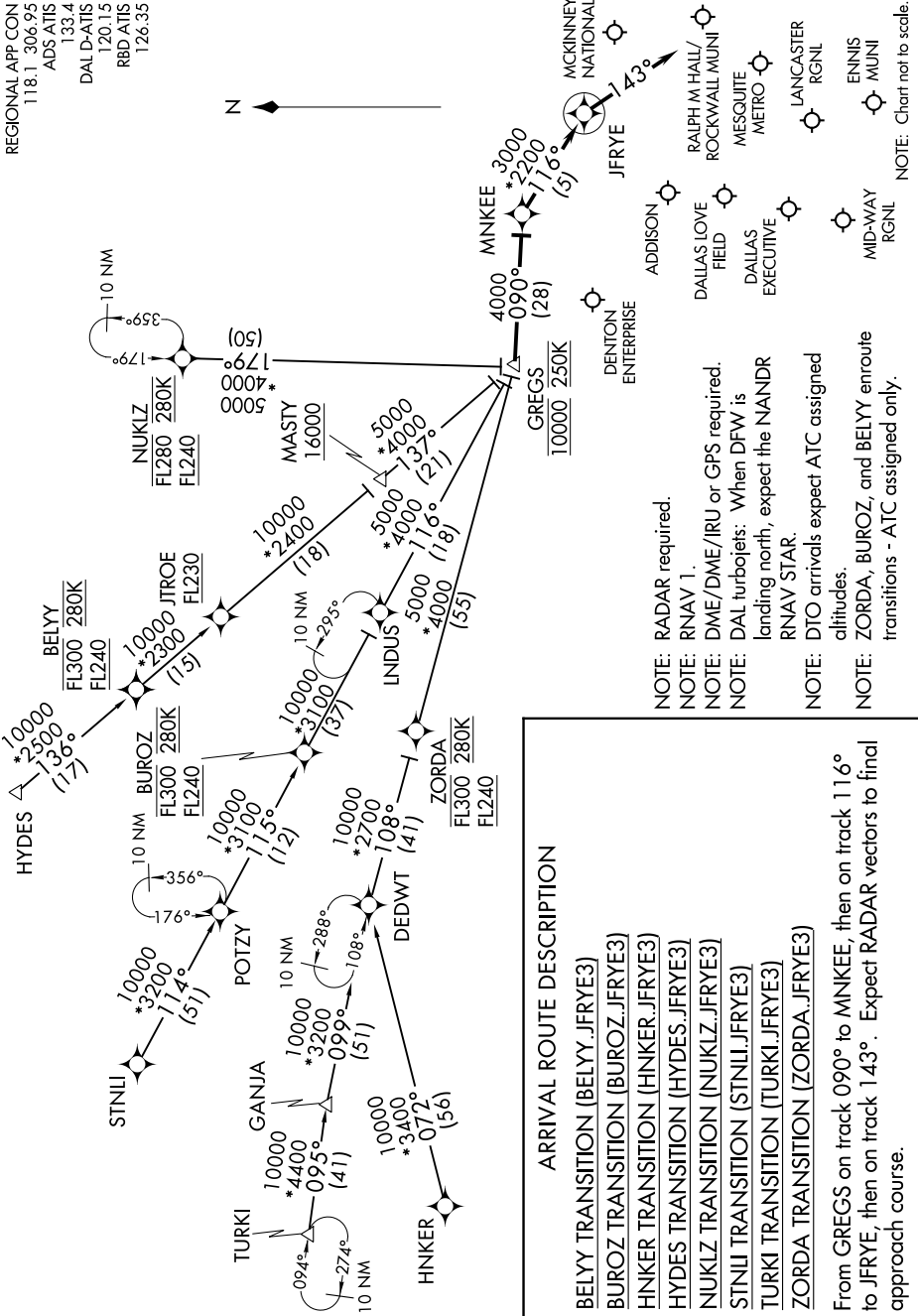


# JFRYE THREE ARRIVAL (RNAV)

DALLAS FORT WORTH, TEXAS

REGIONAL APP CON  
118.1 306.95  
ADS ATIS  
133.4  
DAL D-ATIS  
120.13  
RBD ATIS  
126.35



- NOTE: RADAR required.
- NOTE: RNAV 1.
- NOTE: DME/DME/IRU or GPS required.
- NOTE: DAL turbojets: When DFW is landing north, expect the NAANDR RNAV STAR.
- NOTE: DTO arrivals expect ATC assigned altitudes.
- NOTE: ZORDA, BUROZ, and BELY enroute transitions - ATC assigned only.

## ARRIVAL ROUTE DESCRIPTION

- BELY TRANSITION (BELY.JFRYE3)
- BUROZ TRANSITION (BUROZ.JFRYE3)
- HNKER TRANSITION (HNKER.JFRYE3)
- HYDES TRANSITION (HYDES.JFRYE3)
- NUKLZ TRANSITION (NUKLZ.JFRYE3)
- STNLI TRANSITION (STNLI.JFRYE3)
- TURKI TRANSITION (TURKI.JFRYE3)
- ZORDA TRANSITION (ZORDA.JFRYE3)

From GREGS on track 090° to MNKEE, then on track 116° to JFRYE, then on track 143°. Expect RADAR vectors to final approach course.

# JFRYE THREE ARRIVAL (RNAV)

DALLAS FORT WORTH, TEXAS