


VORTAC CEC <b>109.0</b> Chan 27	APP CRS <b>131°</b>	Rwy Idg <b>5002</b> TDZE <b>60</b> Apt Elev <b>61</b>
---------------------------------------	------------------------	---

# VOR/DME RWY 12

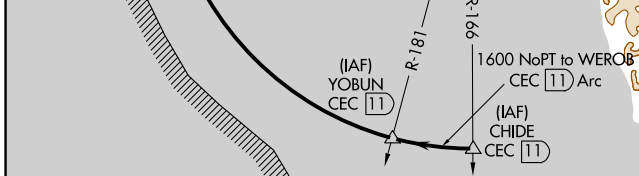
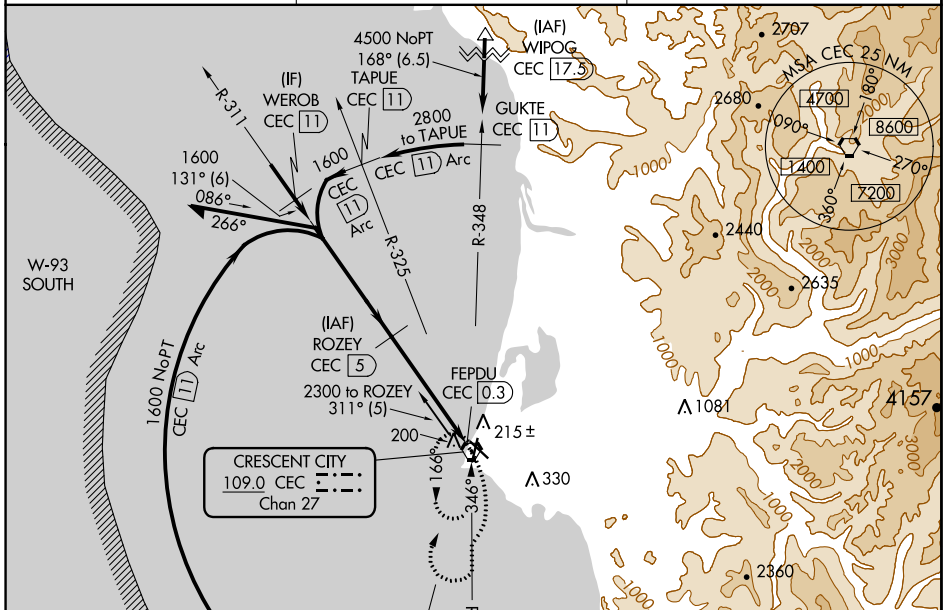
JACK MC NAMARA FIELD (CEC)

**▼** VDP NA with Brookings altimeter setting. When local altimeter setting not received, use Brookings altimeter setting and increase all MDA 100 feet; increase S-12 Cat C/D, and Circling Cat D visibility ¼ mile, and Circling Cat C visibility ½ mile. For inop MALSR, increase S-12 Cats A/B visibility to 1 mile. Cats C/D visibility to 1 ½ mile. For inop MALSR when using Brookings altimeter setting, increase S-12 Cats A/B visibility to 1 mile, Cats C/D visibility to 1 ½ mile. Night Landing: Rwy 18, 30 NA. Night Landing: Rwy 36 operational VGSJ required, remain on or above VGSJ glidepath until threshold.

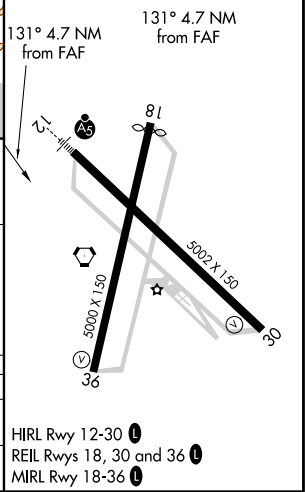
**MALSR** 



**MISSED APPROACH:** Climbing right turn to 3000 on CEC VORTAC R-166 then right turn direct CEC VORTAC and hold.

ASOS <b>119.925</b>	SEATTLE CENTER <b>124.85 306.3</b>	UNICOM <b>122.8 (CTAF) 0</b>
------------------------	---------------------------------------	---------------------------------



ELEV 61	TDZE 60
---------	---------



Remain within 10 NM	ROZEY CEC 5	3000	CEC
1600	131°	CEC R-166	
1600	311°	CEC 1.4	
2.98° TCH 50	FEPDU CEC 0.3		
3.6 NM	1.2 NM		

CATEGORY	A	B	C	D
S-12	480-¾	420 (500-¾)	480-1	420 (500-1)
<b>C</b> CIRCLING	540-1	479 (500-1)	640-1½ 579 (600-1½)	640-2 579 (600-2)

HIRL Rwy 12-30 0  
REIL Rws 18, 30 and 36 0  
MIRL Rwy 18-36 0

SW-2, 31 DEC 2020 to 28 JAN 2021

SW-2, 31 DEC 2020 to 28 JAN 2021