

VORTAC ALB <b>115.3</b> Chan <b>100</b>	APP CRS <b>275°</b>	Rwy Idg TDZE Apt Elev	<b>6007</b> <b>285</b> <b>285</b>
---	------------------------	-----------------------------	---

# VOR RWY 28

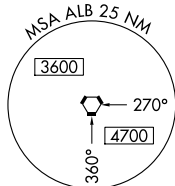
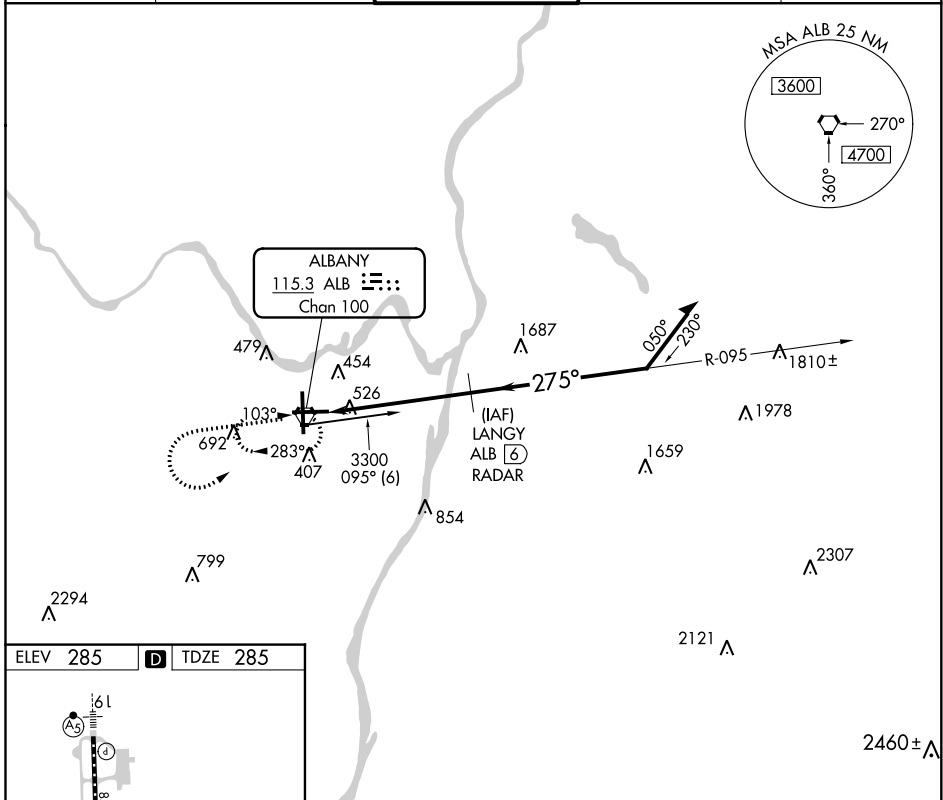
ALBANY INTL (ALB)

DME or RADAR required.

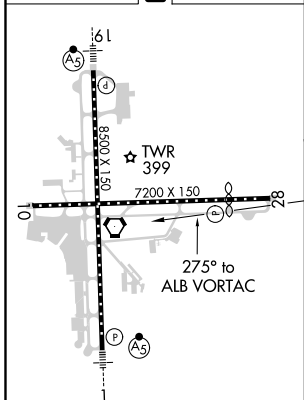
**▼** Circling NA West of Rwy 1-19. Straight-in Rwy 28 NA at night, Circling Rwy 28  
**▲** NA at night. Rwy 28 helicopter visibility reduction below 1 SM NA.

MISSED APPROACH: Climb to 3000, then climbing left turn to 4000 direct ALB VORTAC and hold.

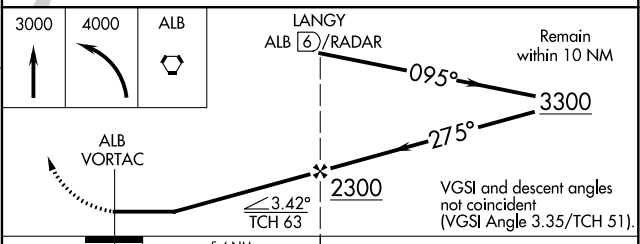
D-ATIS <b>120.45</b>	ALBANY APP CON <b>132.825 307.2</b>	ALBANY TOWER <b>119.5 257.8</b>	GND CON <b>121.7 348.6</b>	CLNC DEL <b>127.50</b>
-------------------------	--	------------------------------------	-------------------------------	---------------------------



ELEV 285	<b>D</b>	TDZE 285
----------	----------	----------



TDZ/CL Rws 1 and 19  
 HIRL Rwy 1-19  
 MIRL Rwy 10-28  
 REIL Rws 10 and 28



CATEGORY	A	B	C	D
S-28	780-1 495 (500-1)		780-1¼ 495 (500-1¼)	780-1½ 495 (500-1½)
<b>C</b> CIRCLING	820-1 535 (600-1)		820-1½ 535 (600-1½)	960-2¼ 675 (700-2¼)

NE-2, 31 DEC 2020 to 28 JAN 2021

NE-2, 31 DEC 2020 to 28 JAN 2021