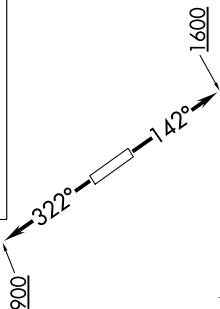


# KARR SIX DEPARTURE (RNAV)

SC-5, 03 DEC 2020 to 31 DEC 2020

**TOP ALTITUDE:  
ASSIGNED BY ATC**

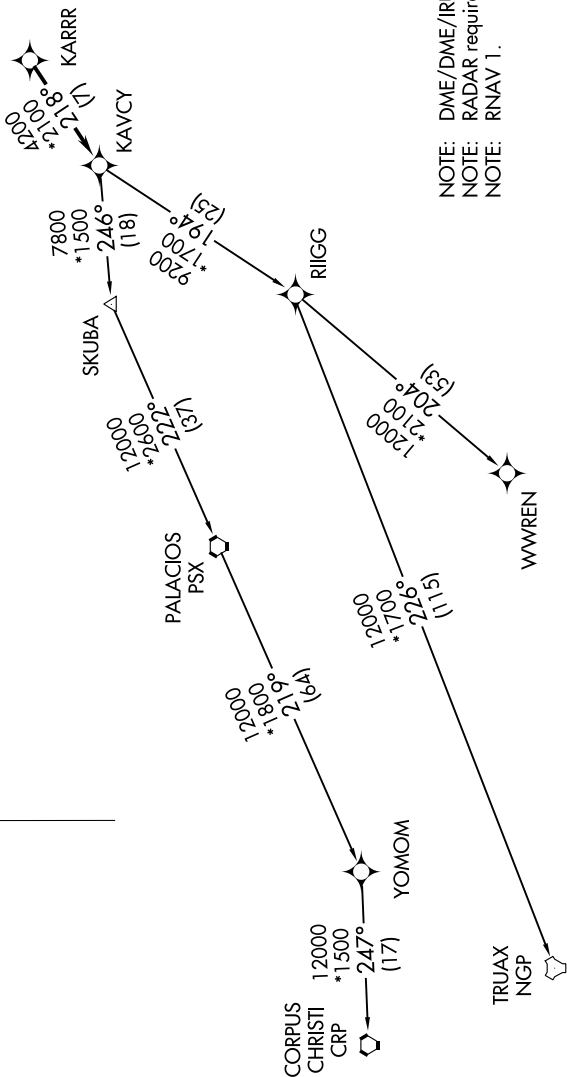
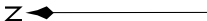


### TAKEOFF MINIMUMS

Rwys 14, 32:

Standard with minimum climb of 500' per NM to 560.

ASOS 118.525  
 CTAF 122.8  
 CLNC DEL 124.0  
 HOUSTON DEP CON 134.45 284.0



NOTE: DME/DME/IRU or GPS required.  
 NOTE: RADAR required.  
 NOTE: RNAV 1.

(NARRATIVE ON FOLLOWING PAGE)

NOTE: Chart not to scale.

SC-5, 03 DEC 2020 to 31 DEC 2020