

VORTAC MHZ <b>113.2</b> Chan <b>79</b>	APP CRS <b>352°</b>	Rwy Idg TDZE <b>329</b> Apt Elev <b>346</b>
--	------------------------	---

# VOR/DME or TACAN RWY 34L

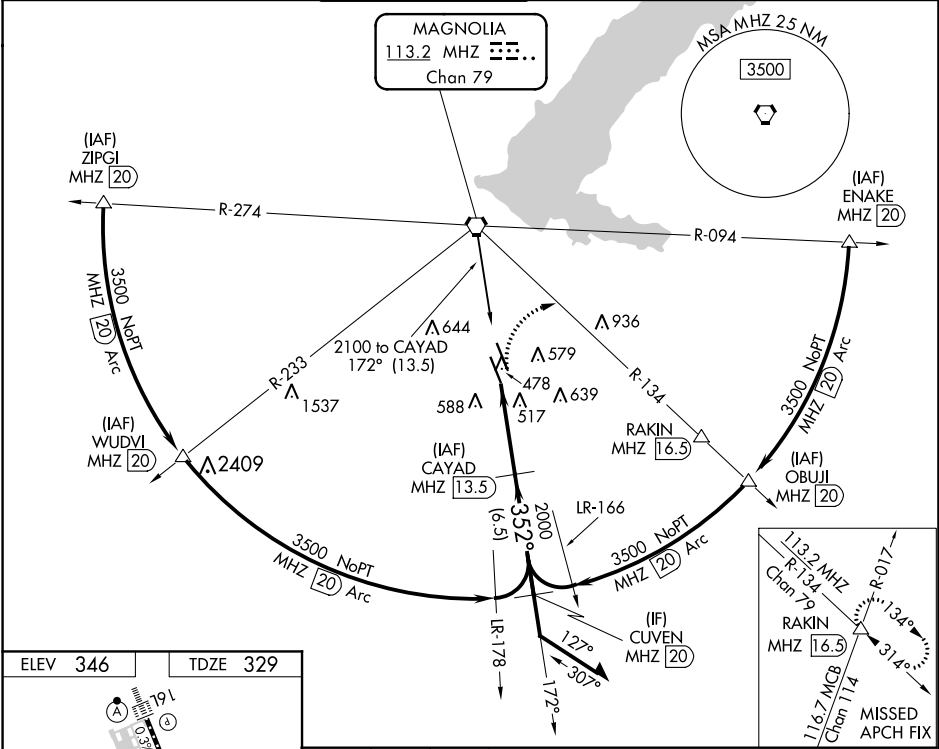
JACKSON-MEDGAR WILEY EVERS INTL (JAN)

**⚠** When local altimeter setting not received, use Hawkins Field altimeter setting and increase all MDA 20 feet; increase S-34L Cats C/D/E visibility 1/8 mile.  
**⚠** Circling NA for Cat E southwest of Rwy 16R-34L. Helicopter visibility reduction below 3/4 SM NA.



**MISSED APPROACH:** Climbing right turn to 3000 on heading 120° and MHZ VORTAC R-134 to RAKIN INT/ MHZ 16.5 DME and hold.

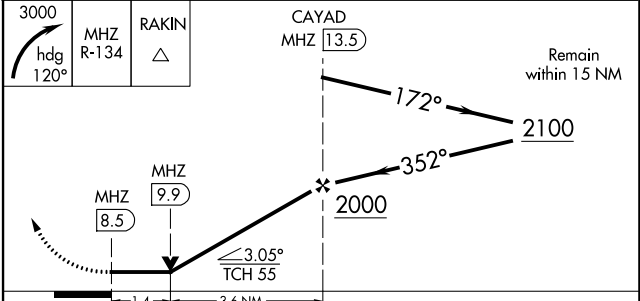
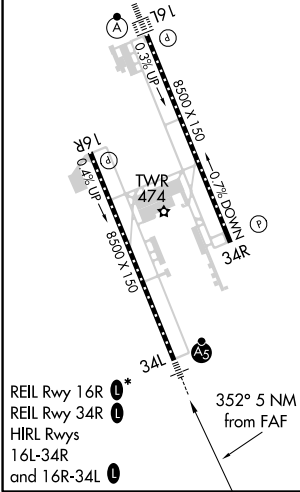
ATIS <b>121.05</b>	JACKSON APP CON* <b>123.9 317.7</b>	JACKSON TOWER* <b>120.9 (CTAF) 352.0</b>	GND CON <b>121.7 348.6</b>	<b>120.7 0*</b>	UNICOM <b>122.95</b>
-----------------------	--	---	-------------------------------	-----------------	-------------------------



SC-4, 03 DEC 2020 to 31 DEC 2020

SC-4, 03 DEC 2020 to 31 DEC 2020

ELEV 346	TDZE 329
----------	----------



CATEGORY	A	B	C	D	E
S-34L	840/55	511 (500-1)	840-1 3/8	511 (500-1 3/8)	
<b>C</b> CIRCLING	880-1	534 (600-1)	900-1 1/2 554 (600-1 1/2)	960-2 614 (700-2)	1040-2 1/2 694 (700-2 1/2)