

ILS or LOC RWY 34L

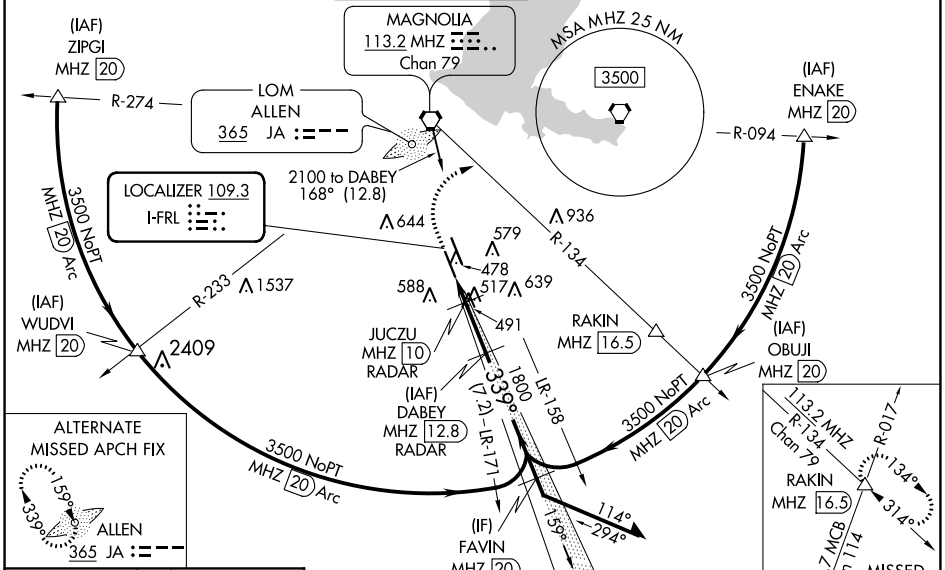
JACKSON-MEDGAR WILEY EVERS INTL (JAN)

LOC I-FRL 109.3	APP CRS 339°	Rwy Idg TDZE Apt Elev	8500 329 346
---------------------------	------------------------	-----------------------------	---

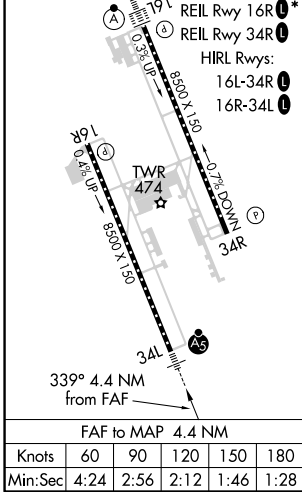
⚠ Circling NA for Cat E southwest of Rwy 16R-34L. DME or RADAR required. When local altimeter setting not received, use Hawkins Field altimeter setting and increase all DA 19 feet and all MDA 20 feet; increase S-ILS 34L visibility to RVR 4000. For inop ALS, increase S-ILS 34L Cat E visibility to RVR 4000 and S-LOC 34L all Cats visibility to 1 1/2 SM. For inop ALS when using Hawkins Field altimeter setting, increase S-LOC 34L Cat E visibility to 1 1/2 SM. Inop table does not apply to S-ILS 34L when using Hawkins Field altimeter setting. Rwy 34L helicopter visibility reduction below RVR 4000 NA. Procedure turn NA for Cat E. #DME from MJHZ VORTAC.

MALSR
AS
MISSED APPROACH: Climb to 1200 then climbing right turn to 3000 on heading 070° and MHZ VORTAC R-134 to RAKIN INT/MHZ 16.5 DME and hold.

ATIS 121.05	JACKSON APP CON ★ 123.9 317.7	JACKSON TOWER ★ 120.9 (CTAF) 0 352.0	GND CON 121.7 348.6	120.7 0*	UNICOM 122.95
-----------------------	---	--	-------------------------------	-----------------	-------------------------



ELEV 346	TDZE 329
----------	----------



1200	3000	RAKIN	DABEY	**860 when using Hawkins Field altimeter setting.
↑	hdg 070°	MHZ R-134	MHZ 12.8 RADAR	
**LOC only.		JUCZU MHZ 10 RADAR	1800	150°
		MHZ 8.5	1800	339°
		**840	1800	2100
		1.5	2.9 NM	GS 3.00°
				TCH 58
				Remain within 10 NM

CATEGORY	A	B	C	D	E
S-ILS 34L	529/18 200 (200-1/2)				
S-LOC 34L	840/40	511 (500-3/4)	840/55 511 (500-1)		
C CIRCLING	880-1	534 (600-1)	900-1 1/2 554 (600-1 1/2)	960-2 614 (700-2)	1040-2 1/2 694 (700-2 1/2)
JUCZU DME MINIMUMS #					
S-LOC 34L	760/40 431 (500-3/4)				
C CIRCLING	880-1	534 (600-1)	900-1 1/2 554 (600-1 1/2)	960-2 614 (700-2)	1040-2 1/2 694 (700-2 1/2)

SC-4, 03 DEC 2020 to 31 DEC 2020

SC-4, 03 DEC 2020 to 31 DEC 2020