

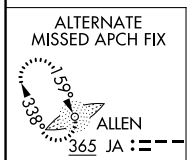
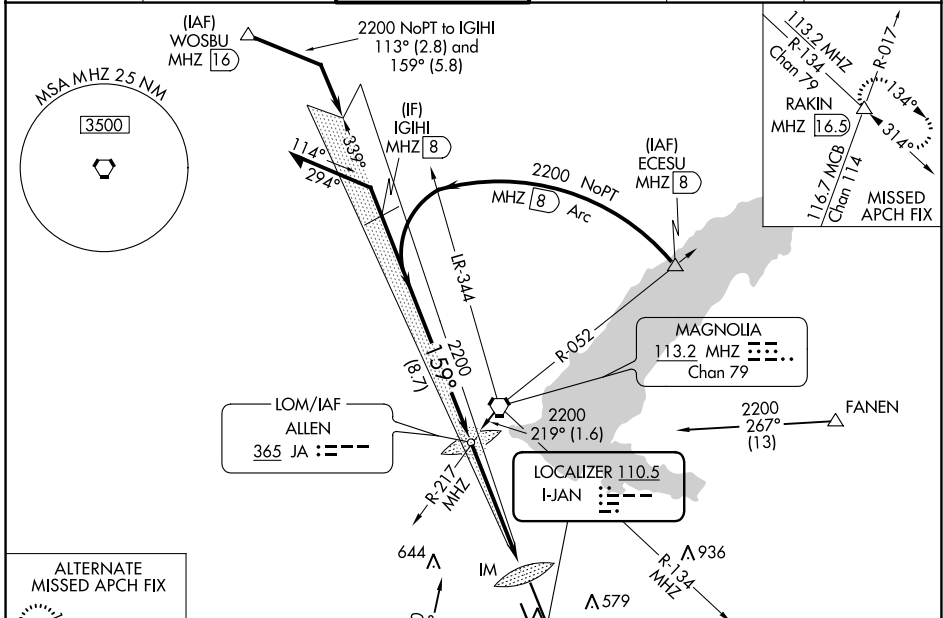
LOC I-JAN <b>110.5</b>	APP CRS <b>159°</b>	Rwy Idg <b>8500</b>
		TDZE <b>312</b>
		Apt Elev <b>346</b>

# ILS RWY 16L (SA CAT I)

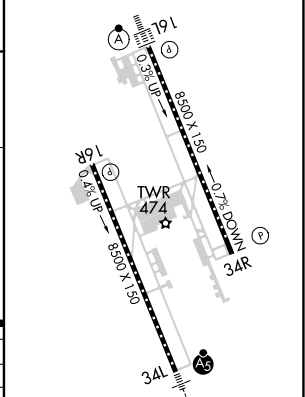
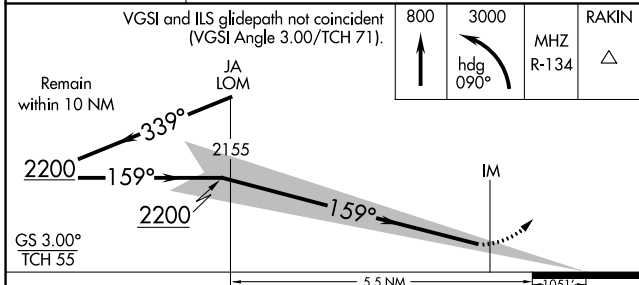
JACKSON-MEDGAR WILEY EVERS INTL (JAN)

<p>Requires specific OPSPEC, MSPEC, or LOA approval and use of HUD to DA. When control tower closed, procedure NA. When local altimeter setting not received, procedure NA.</p>	ALSIF-2 	MISSED APPROACH: Climb to 800 then climbing left turn to 3000 on heading 090° and MHZ VORTAC R-134 to RAKIN INT/MHZ 16.5 DME and hold.

ATIS <b>121.05</b>	JACKSON APP CON * <b>123.9 317.7</b>	JACKSON TOWER * <b>120.9 (CTAF) 0 352.0</b>	GND CON <b>121.7 348.6</b>	<b>120.7 0 *</b>	UNICOM <b>122.95</b>
-----------------------	---	--	-------------------------------	------------------	-------------------------



ELEV 346	TDZE 312
----------	----------



CATEGORY	A	B	C	D
S-ILS 16L	RA 169/14 150 DA 462			

**SA CATEGORY I ILS - SPECIAL AIRCREW & AIRCRAFT CERTIFICATION REQUIRED**

REIL Rwy 16R **1**\*  
 REIL Rwy 34R **1**  
 HIRL Rwys  
 16L-34R and 16R-34L **1**