

WAAS CH <b>86911</b> <b>W27A</b>	APP CRS <b>272°</b>	Rwy Idg TDZE Apt Elev	<b>7000</b> <b>701</b> <b>703</b>
--	------------------------	-----------------------------	---

# RNAV (GPS) RWY 27

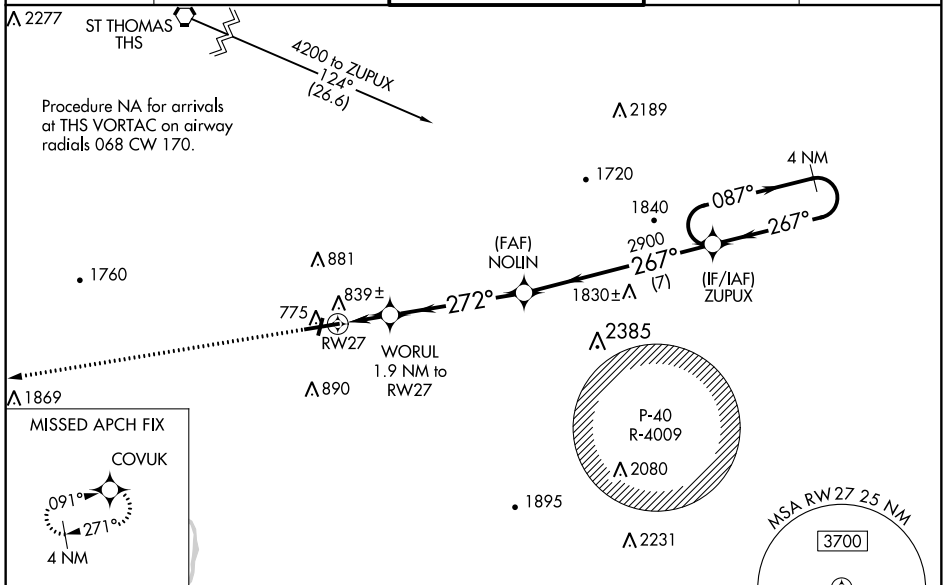
HAGERSTOWN RGNL-RICHARD A HENSON FIELD (HGR)

**⚠** Rwy 20 helicopter visibility reduction below 1 SM NA. Circling Rwy 20 NA at night. For uncompensated Baro-VNAV systems, LNAV/VNAV NA below -14°C (7°F) or above 54°C (130°F). DME/DME RNP-0.3 NA. When local altimeter setting not received, use Martinsburg altimeter setting and increase all DA 70 feet and all MDA 80 feet; increase LNAV/VNAV all Cats, LNAV Cats C-D and Circling Cat D visibility ¼ mile. VDP and Baro-VNAV NA with Martinsburg altimeter setting.

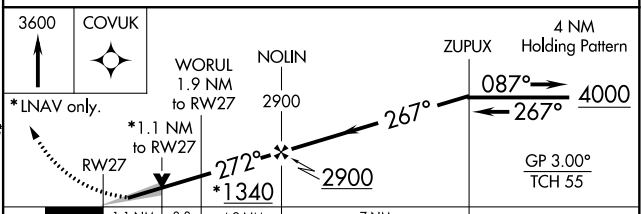
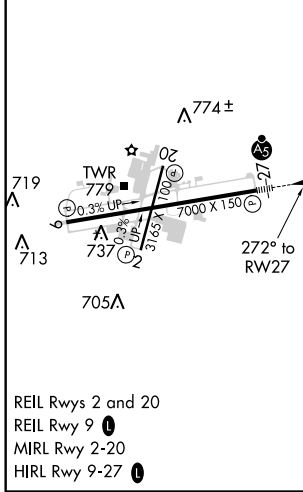
**MALSR**

**MISSED APPROACH:**  
Climb to 3600 direct COVUK and hold.

ASOS <b>126.375</b>	POTOMAC APP CON <b>126.825 239.025</b>	HAGERSTOWN TOWER * <b>120.3 (CTAF) 0 225.4</b>	GND CON <b>120.8</b>	UNICOM <b>122.95</b>
------------------------	---	---	-------------------------	-------------------------



ELEV 703	<b>D</b>	TDZE 701
----------	----------	----------



CATEGORY	A	B	C	D
LPV DA	901-½		200 (200-½)	
LNAV/VNAV DA	1035-⅝		334 (400-⅝)	
LNAV MDA	1100-½	399 (400-½)	1100-¾	399 (400-¾)
<b>C</b> CIRCLING	1160-1	457 (500-1)	1200-1½ 497 (500-1½)	1320-2 617 (700-2)

NE-3, 03 DEC 2020 to 31 DEC 2020

NE-3, 03 DEC 2020 to 31 DEC 2020