

ILS or LOC RWY 9

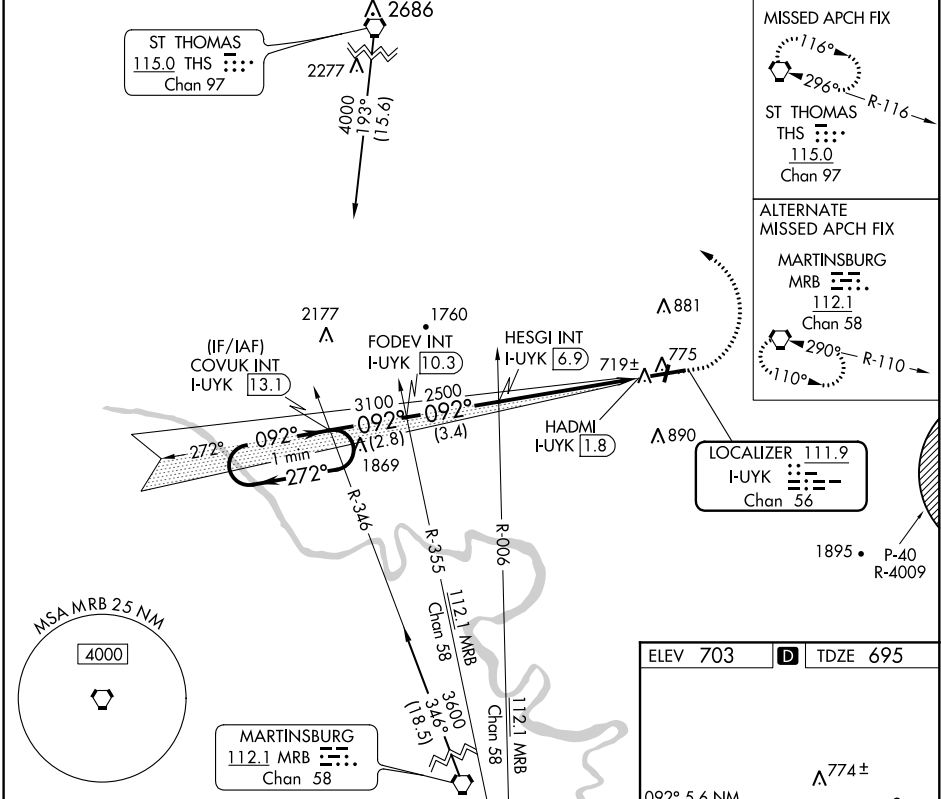
HAGERSTOWN RGNL-RICHARD A HENSON FIELD (HGR)

LOC/DME I-UYK 111.9 Chan 56	APP CRS 092°	Rwy ldg 7000 TDZE 695 Apt Elev 703
---	------------------------	---

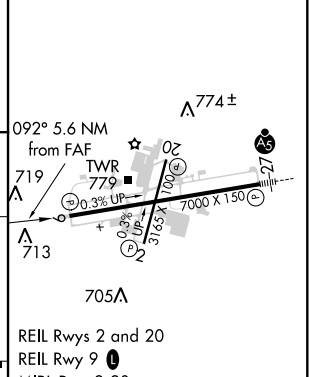
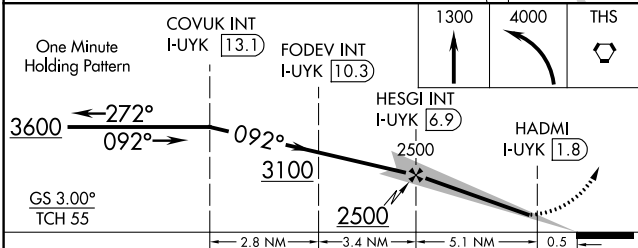
⚠ Rwy 20 helicopter visibility reduction below 1 SM NA. Circling Rwy 20 NA at night.
⚠ When local altimeter setting not received, use Martinsburg altimeter setting and increase DA to 934 and all MDA 80 feet; increase S-ILS all Cats and S-LOC Cats C/D visibility 1/8 and Circling Cat D 1/4 mile.

MISSED APPROACH: Climb to 1300 then climbing left turn to 4000 direct THS VORTAC and hold.

ASOS 126.375	POTOMAC APP CON 126.825 239.025	HAGERSTOWN TOWER * 120.3 (CTAF) 225.4	GND CON 120.8	UNICOM 122.95
------------------------	---	---	-------------------------	-------------------------



ELEV 703	D TDZE 695
----------	-------------------



CATEGORY	A	B	C	D
S-ILS 9	895-3/4 200 (200-3/4)			
S-LOC 9	980-1	285 (300-1)	980-7/8	285 (300-7/8)
C CIRCLING	1160-1	457 (500-1)	1200-1 1/2	1320-2
			497 (500-1 1/2)	617 (700-2)

FAF to MAP 5.1 NM					
Knots	60	90	120	150	180
Min:Sec	5:06	3:24	2:33	2:02	1:42

NE-3, 03 DEC 2020 to 31 DEC 2020

NE-3, 03 DEC 2020 to 31 DEC 2020