

WAAS CH 48902 W10A	APP CRS 096°	Rwy Idg TDZE Apt Elev	8424 7 65
--	------------------------	-----------------------------	--------------------------------------

RNAV (GPS) Z RWY 10L

FORT LAUDERDALE/HOLLYWOOD INTL (FLL)

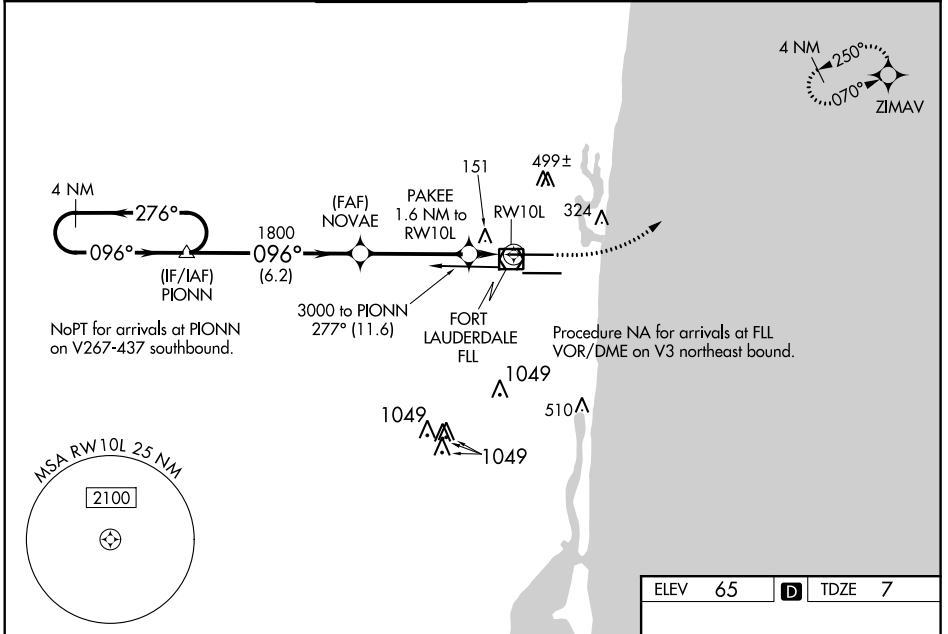
RNP APCH.

▽ For uncompensated Baro-VNAV systems, LNAV/VNAV NA below 5°C (40°F) or above 54°C (130°F). For inop MALSRS, increase LNAV Cat A, B visibility to RVR 5500. Rwy 10L helicopter visibility reduction below RVR 4000 NA. Inop table does not apply to LPV all Cats. LNAV procedure NA during simultaneous operations. Use of FD or AP required during simultaneous operations. Simultaneous approach authorized.

⚠ MISLSR

MISSED APPROACH: Climb to 800 then climbing left turn to 2000 direct ZIMAV and hold.

D-ATIS 135.0	MIAMI APP CON 133.775 285.6	FORT LAUDERDALE TOWER 119.3 257.8	GND CON 121.4	CLNC DEL 128.4	CPDLC
------------------------	---------------------------------------	--	-------------------------	--------------------------	-------



ELEV 65		TDZE 7	
4 NM Holding Pattern		*LNNAV only.	
GP 3.00° TCH 48		*1.2 NM to RW10L	
VGSI and RNAV glidepath not coincident (VGSI Angle 3.00/TCH 66).		800 2000 ZIMAV	
2500 ← 276° / 096° →		*560	
PIONN		NOVAE 1800	
6.2 NM		3.9 NM	
0.4 NM		1.2 NM	
CATEGORY	A	B	C
LPV DA	257/40		250 (200-¾)
LNAV/VNAV DA	477/57		470 (500-1½)
LNAV MDA	460/40	453 (400-¾)	460/45 453 (400-⅞)
C CIRCLING	680-1	615 (700-1)	800-2 735 (800-2)
			800-2¼ 735 (800-2¼)

HIRL Rwy 10L-28R and 10R-28L

SE-3, 03 DEC 2020 to 31 DEC 2020

SE-3, 03 DEC 2020 to 31 DEC 2020