


APP CRS <b>276°</b>	Rwy Idg <b>8394</b>
	TDZE <b>7</b>
	Apt Elev <b>9</b>

# RNAV (RNP) Z RWY 28R

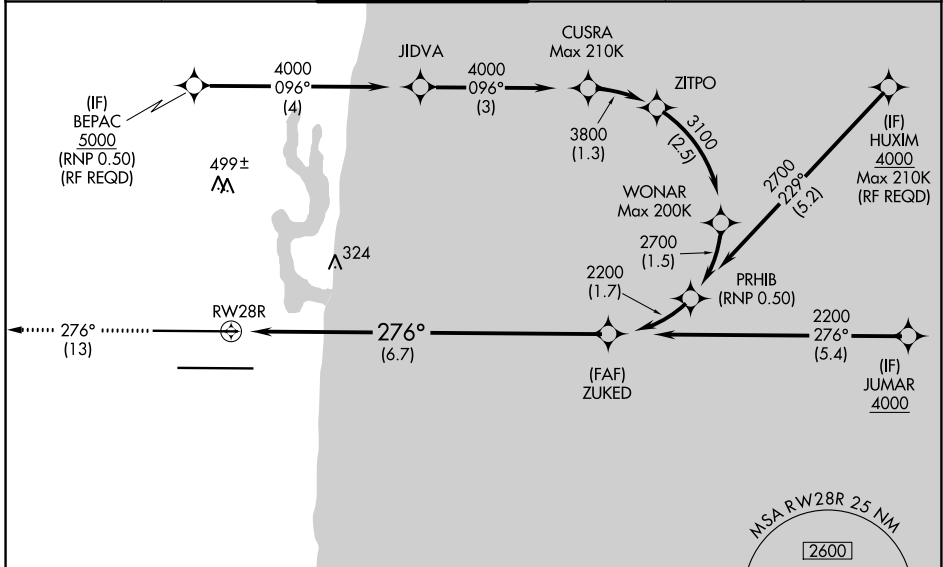
FORT LAUDERDALE/HOLLYWOOD INTL (FLL)

▼ For uncompensated Baro-VNAV systems, procedure NA below 5°C (40°F) or above 54°C (130°F). GPS Required. Inop table does not apply.

MALSR 

MISSED APPROACH: Climb to 4000 on track 276° to PIONN and hold, continue climb-in-hold to 4000.

D-ATIS <b>135.0</b>	MIAMI APP CON <b>133.775 285.6</b>	<b>FORT LAUDERDALE TOWER</b> <b>119.3 257.8</b>	GND CON <b>121.4</b>	CLNC DEL <b>128.4</b>	CPDLC
------------------------	---------------------------------------	--	-------------------------	--------------------------	-------



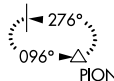
SE-3, 03 DEC 2020 to 31 DEC 2020

SE-3, 03 DEC 2020 to 31 DEC 2020

ELEV <b>9</b>	<b>D</b>	TDZE <b>7</b>
---------------	----------	---------------

MISSED APCH FIX

4 NM

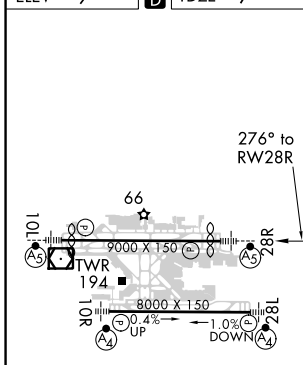


PIONN

**RADAR REQUIRED**

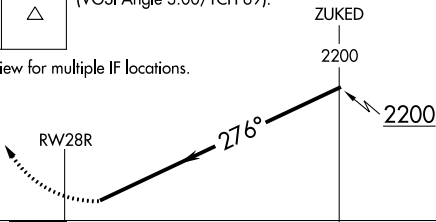
MSA RW28R 2.5 NM





4000 PIONN VGSi and RNAV glidepath not coincident (VGSi Angle 3.00/TCH 69).

See planview for multiple IF locations.



GP 3.00° TCH 49

CATEGORY	A	B	C	D
RNP 0.15 DA		405-1 $\frac{3}{8}$	398 (400-1 $\frac{3}{8}$ )	
RNP 0.30 DA		627-1 $\frac{3}{8}$	620 (700-1 $\frac{3}{8}$ )	

HIRL Rwy 10L-28R and 10R-28L

**AUTHORIZATION REQUIRED**