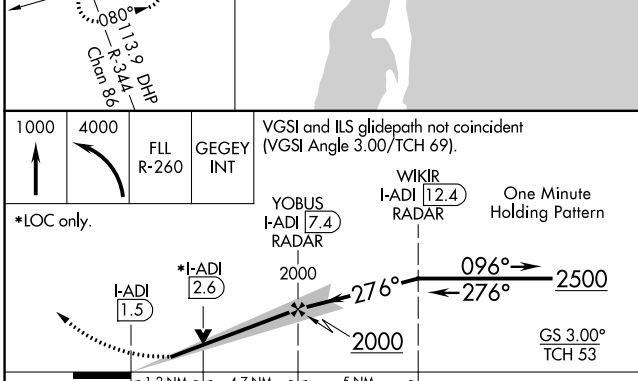
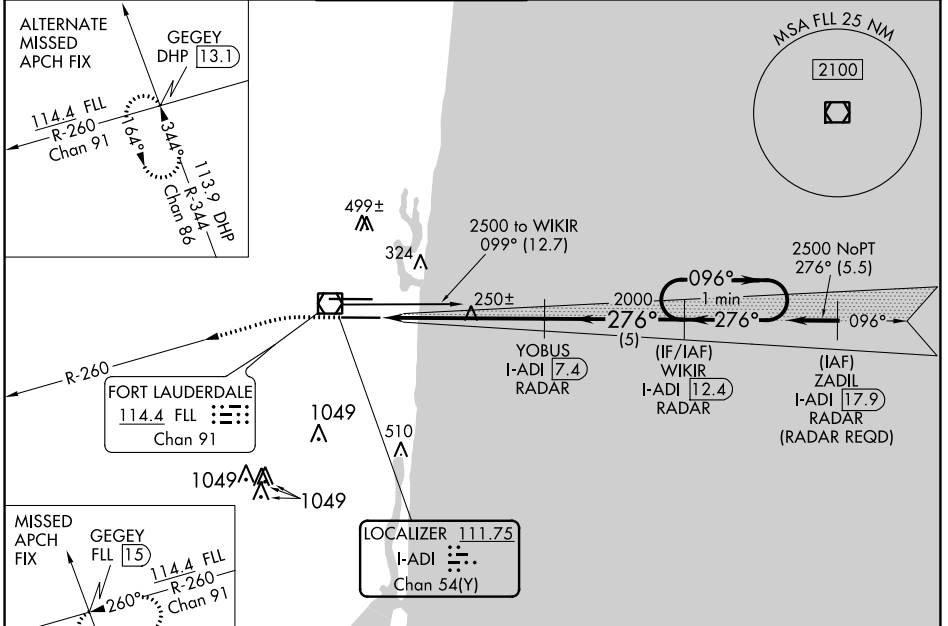


|   |                        |  |
|---|------------------------|--|
| LOC/DME I-ADI<br><b>111.75</b><br>Chan <b>54(Y)</b> | APP CRS<br><b>276°</b> | Rwy Idg<br>TDZE<br>Apt Elev<br><b>8000</b><br><b>65</b><br><b>65</b> |
|---|------------------------|--|

# ILS or LOC RWY 28L

FORT LAUDERDALE/HOLLYWOOD INTL (FLL)

|                        |   |  |  |                          |       |
|------------------------|---|--|--|--------------------------|-------|
| <b>▽</b><br><b>▲</b>   | DME or RADAR Required. Simultaneous approach authorized. Inop table does not apply to S-ILS 28L. For inop ALS, increase S-LOC 28L Cat D visibility to 1 1/4 SM. | MALSF<br>  | MISSED APPROACH: Climb to 1000 then climbing left turn to 4000 on FLL VOR/DME R-260 to GEGEY INT/FLL 1.5 DME and hold, continue climb-in-hold to 4000. |                          |       |
| D-ATIS<br><b>135.0</b> | MIAMI APP CON<br><b>133.775 285.6</b>   | <b>FORT LAUDERDALE TOWER</b><br><b>119.3 257.8</b> | GND CON<br><b>121.4</b>  | CLNC DEL<br><b>128.4</b> | CPDLC |



|                             |                          |
|-----------------------------|--------------------------|
| ELEV 65                     | <b>D</b> TDZE 65         |
|                             |                          |
| HRL Rwy 10L-28R and 10R-28L |                          |
| FAF to MAP 5.9 NM           |                          |
| Knots                       | 60 90 120 150 180        |
| Min:Sec                     | 5:54 3:56 2:57 2:22 1:58 |

|                   |        |               |               |                 |
|-------------------|--------|---------------|---------------|-----------------|
| CATEGORY          | A      | B             | C             | D               |
| S-ILS 28L         |        | 265/40        | 200 (200-3/4) |                 |
| S-LOC 28L         | 500/40 | 435 (500-3/4) | 500/50        | 435 (500-1)     |
| <b>C</b> CIRCLING | 680-1  | 615 (700-1)   | 800-2         | 800-2 1/4       |
|                   |        |               | 735 (800-2)   | 735 (800-2 1/4) |

SE-3, 03 DEC 2020 to 31 DEC 2020

SE-3, 03 DEC 2020 to 31 DEC 2020