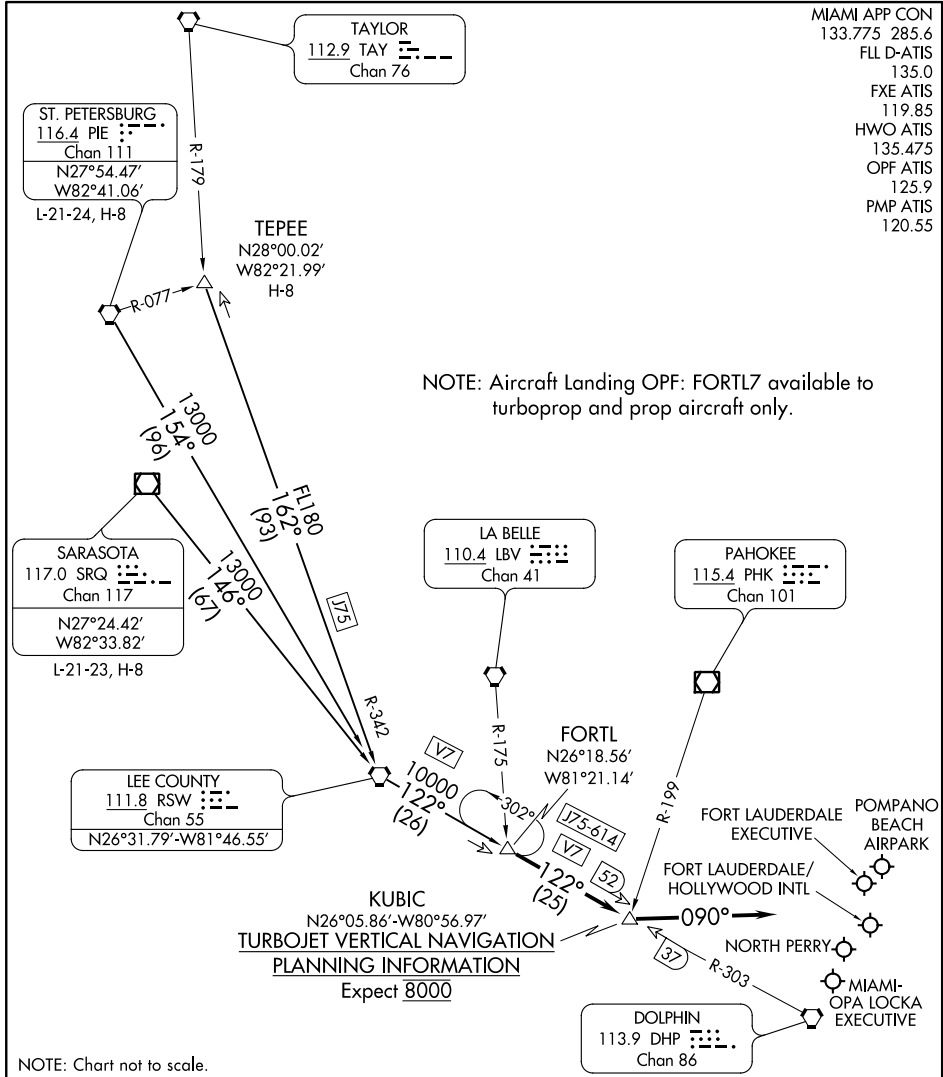


FORTL SEVEN ARRIVAL

FORT LAUDERDALE, FLORIDA

MIAMI APP CON
 133.775 285.6
 FLL D-ATIS
 135.0
 FXE ATIS
 119.85
 HWO ATIS
 135.475
 OPF ATIS
 125.9
 PMP ATIS
 120.55



SE-3, 03 DEC 2020 to 31 DEC 2020

SE-3, 03 DEC 2020 to 31 DEC 2020

NOTE: Chart not to scale.

ARRIVAL ROUTE DESCRIPTION

ST. PETERSBURG TRANSITION (PIE.FORTL7): From over PIE VORTAC on PIE R-154 to RSW VORTAC, then on RSW R-122 to FORTL INT. Thence. . . .

SARASOTA TRANSITION (SRQ.FORTL7): From over SRQ VOR/DME on SRQ R-146 to RSW VORTAC, then on RSW R-122 to FORTL INT. Thence. . . .

TEPEE TRANSITION (TEPEE.FORTL7): From over TEPEE INT on J75 and RSW R-342 to RSW VORTAC, then on RSW R-122 to FORTL INT. Thence. . . .

. . . . From over FORTL INT on RSW R-122 to KUBIC INT, then heading 090°.
 Expect RADAR vectors to final approach course.

FORTL SEVEN ARRIVAL

FORT LAUDERDALE, FLORIDA